

**PR621****LADIES' HOSPITALITY WAISTCOAT**

CARTON	PACK	NO. SKU'S
24	6	5

**Fabric**

65% Polyester, 35% Cotton twill. 195gsm

**Colours**

Black,

**Sizes**

S, M, L, XL, 2XL

**Features**

- Ladies' easy care waistcoat
- Contemporary style four button waistcoat
- Two functional watch pockets
- Complements men's PR620

**Country of Origin**

China

**Carton Dimensions**

60cm x 40cm x 22cm

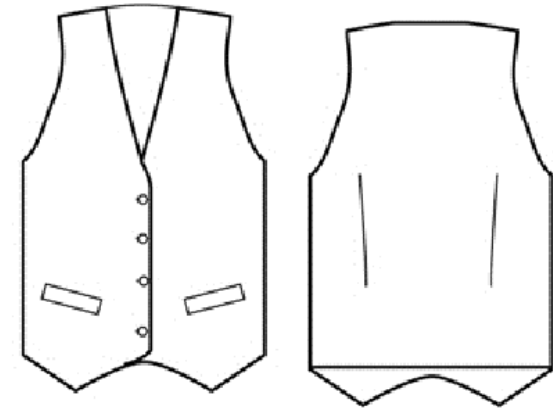
**Carton Weight**

10kg approx.

**VAT Code**

6211 43 1000

Colour	Pantone	C	M	Y	K
Black	Black	0	0	0	100



Size	S	M	L	XL	2XL
<b>Dress size</b>	8	10	12	14	16
<b>Bust to fit"</b>	34	38	42	46	50
<b>Bust to fit cm</b>	86	96	106	116	126
<b>Bust actual cm</b>	88	96	104	112	120
<b>DE,NL</b>	36	40	44	48	52
<b>FR,ES,PT</b>	36	40	44	48	52
<b>IT</b>	40	44	48	52	56
<b>Back length cm</b>	55	55	55	55	55

**Marketing Description**

A ladies' hospitality waistcoat with contemporary four button fastening and two functional watch pockets. This waistcoat is great for those who require a more smart and formal approach to service uniforms and it looks great when teamed with a Premier blouse and complementing tie.



INDUSTRIAL LAUNDERING 85°C MAXIMUM