



MEDIUM FIT

- Stretch poplin
- Cut-away collar
- Cross stitched mother-of-pearl effect buttons
- Folded hem sleeves
- Short modern back yoke
- Inside lap seams for perfect finish
- Shorter length – can be worn untucked
- Curved bottom hem
- Darts at back panel



97% **combed** cotton - 3% elastane

Poplin

135 g/m²

STRETCH

S > 4XL

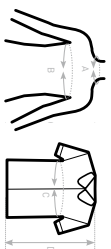
1 pack & 10 per carton



DUQ
CONCEPT
with B&C Black Tie SSL / women

SIZES (CM)

| B&C BLACK TIE SSL / M - SM P22 | | XS | S | M | L | XL | 2XL | 3XL | 4XL | 5XL | 6XL |
|--------------------------------|--------------------|---------|--------|---------|---------|---------|---------|---------|-----|-----|-----|
| A | COLLAR TO FIT | 37/38 | 39/40 | 41/42 | 43/44 | 45/46 | 47/48 | 49/50 | - | - | - |
| B | CHEST TO FIT | 143/151 | 145 | 147/148 | 149/152 | 151 | 153/154 | 155 | - | - | - |
| C | CHEST TO FIT | 92/97 | 97/102 | 102/107 | 107/113 | 112/117 | 117/122 | 122/127 | - | - | - |
| D | CHEST SIZE | 86/88 | 88/90 | 90/92 | 92/94 | 94/96 | 96/98 | 98/100 | - | - | - |
| E | CENTER BACK LENGTH | 72 | 73 | 74 | 76 | 78 | 79 | 81 | 82 | - | - |



STRETCH MEN'S SHORT SLEEVED

EASY CARE POPLIN SHIRT

