

CARTON	PACK	NO. SKU'S
24	6	5

**Fabric**

65% Polyester, 35% Cotton twill. 195gsm

**Colours**

Black,

**Sizes**

S, M, L, XL, 2XL

**Features**

- Men's easy care waistcoat
- Contemporary style five button waistcoat
- Two functional watch pockets
- Self fabric back
- Complements ladies' PR621

**Country of Origin**

China

**Carton Dimensions**

60cm x 40cm x 22cm

**Carton Weight**

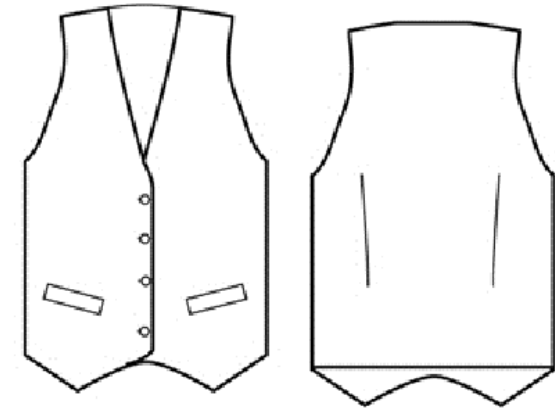
10kg approx.

**VAT Code**

6211 33 1000

**PR620****MEN'S HOSPITALITY WAISTCOAT**

Colour	Pantone	C	M	Y	K
Black	Black	0	0	0	100



Call size	S	M	L	XL	2XL
Chest to fit "	36	40	44	46	52
Chest to fit cm	86	96	106	116	126
Chest actual cm	104	112	120	128	136
DE,NL	46	48	52	56	58
FR,ES,PT	42	44	46	48	50
Back length cm	58	58	58	58	58

**Marketing Description**

A men's hospitality waistcoat with contemporary five button fastening and two functional watch pockets. This waistcoat is great for those who require a more smart and formal approach to service uniforms and it looks great over a Premier shirt with a complementing tie.



INDUSTRIAL LAUNDERING 85°C MAXIMUM