

DENNNYS BRANDS



By Appointment
To Her Majesty Queen Elizabeth II
Suppliers Of Catering Clothing
Dennys Brands
London

2021 Gallery Catalogue



Sustainable. Ethical. Recycled.



Dear uniform buyer and wearer,

- We believe our stock of work clothing for Hospitality is the broadest range available.
- Our 100% recycled fabric range of aprons continues to grow in popularity with new “must have” colours.
- More denim in new light-weights and colours plus new shoes designed specifically for Hospitality.
- A first in our industry-bleach resistant stretch fabric for men’s and women’s trousers.

Our long term factories continue to improve their accreditations and our UK organisation is proud of our recently renewed ISO 9001 Quality Management-certification.

Our London presence is stronger than ever with our Berners Street Department store covering every discipline you may want from:

- Stocks of suits, shirts, knitwear, aprons and kitchen wear
- Design staff for bespoke ranges
- Meeting room
- Staff suit fittings
- Shoe department
- Knife department (free professional knife sharpening for any knives)
- Our own van deliveries in London, which also connects our own embroidery department daily to London

We look forward to helping you with your clothing needs.

Nick Jubert
Owner

Contents:

2 Aprons	26 Chef Jackets	41 Men’s and Ladies’ Shirts	43 Service
52 Trousers	58 Headwear	61 Ties	63 Gloves
64 Coats and Overalls	65 Cloths and Accessories	69 Footwear	74 Knives
77 Icon Guide	78 Embroidery and Alterations	79 High Performance Breathable Panels In Our Ranges	80 Measuring

OUR GUARANTEE:

- If for any reason you are not completely happy with your purchase you can send it back for a no quibble refund.
Goods must be returned within 30 days in its original packaging.

TERMS & CONDITIONS:

- All shortages, damages or non-delivery must be notified to us by telephone within 7 working days.
- All goods must be returned in good condition, original packaging, unworn, not processed or washed.
- All colours and sizes shown in our catalogue are for guidance only.
- Printed or embroidered goods will NOT be accepted back for credit.
- Goods cannot be returned for any reason after 90 days from date of purchase.
- A restocking fee of 15% will be charged for goods returned later than 30 days, and 30% if returned later than 60 days.

100% Recycled Polyester

Over 18 product ranges in 100% recycled polyester.

Environmentally friendly.
Sustainably manufactured.

Look for the logo



DENNYS BRANDS
Flagship Store



62 Berners Street,
London,
W1T 3NN

Monday - Friday: 10am - 6pm

Accreditations

These are the accreditations that we, our partners and manufacturers hold. So you can be assured we care about the quality, environment and ethics of all our products.*



*accreditations vary from product to product

JOSEPH ALAN
LONDON

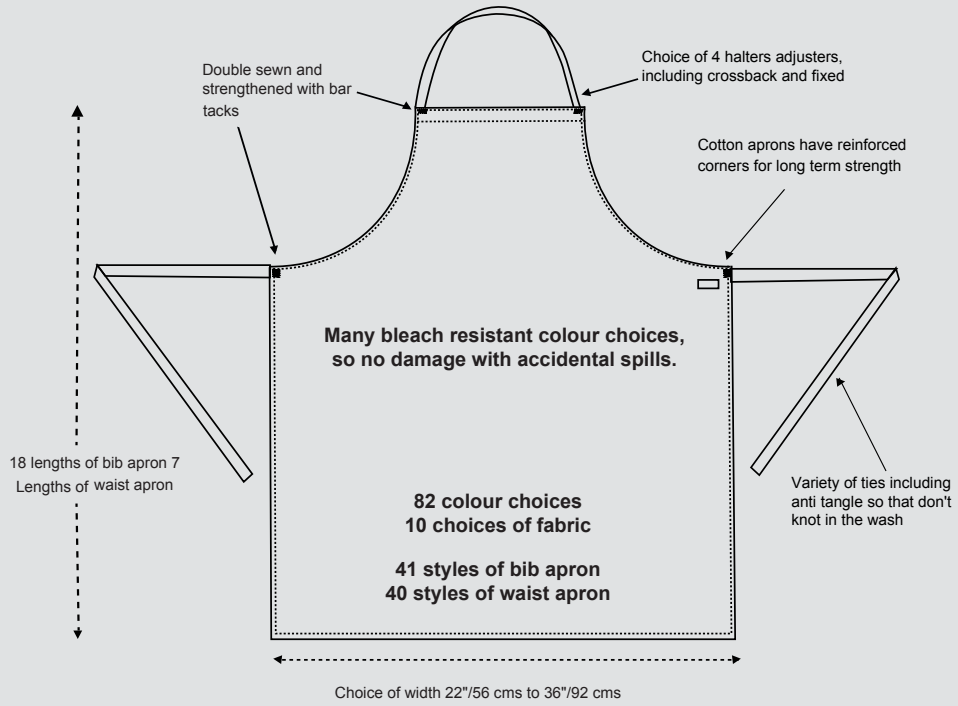


Call Joseph Alan on
020 7536 9411 to discuss
bespoke uniforms



OUR APRONS

WE MAKE THE ORDINARY - EXTRAORDINARY



HAVE YOU TRIED OUR EMBROIDERY SERVICE?

WE CAN DO ANYTHING FROM LOGOS TO MONOGRAMMING

Dennys
LONDON®



**BEST
SELLER**

1

2

3

100%
Polyester

195g

65°

W: 28cm
L: 88cm



100%
Polyester

195g

65°

W: 28cm
L: 88cm



100%
Polyester

195g

65°

W: 35cm
L: 28cm



1 DP200 REGULAR SIZE

Colour Bib Apron – No Pocket

- 100% Recycled Polyester. 195 gsm
- Wash at 65°C
- W 25cm (10") x L 85cm (34")
- Bleach resistant
- Adjustable halter
- Suitable for embroidery
- Crease resistant

2 DP210 REGULAR SIZE

Colour Bib Apron with Pocket

- 100% Recycled Polyester. 195 gsm
- Wash at 65°C
- W 25cm (10") x L 85cm (34")
- Bleach resistant
- Pocket [30cm (12") long 25cm (10") deep]
- Suitable for embroidery
- Crease resistant

3 PKT

Pick a Pocket for DP100/200 Aprons

- 100% Recycled Polyester. 195 gsm
- Wash at 65°C
- W 35cm (14") x L 25cm (10")
- Bleach resistant
- Suitable for embroidery
- Crease resistant

Available in 35 colours:



Fed Up With Poor Quality Aprons?

- Lightweight material- that wears out very quickly?
- Narrow width - that does not cover your sides or back? 🙄
- Colour - that is damaged by bleach and cleaners?
- Non adjustable halters that do not account for short or tall staff?
 - No choice of widths?
 - No choice of lengths?

Then Try the Apron Experts

Dennys Poly/Cotton aprons are made from 245 gram Poly/Cotton material.

Most competitors use only 200 gram

Dennys" full size" aprons are 36"/91cm wide 😊

Many Dennys aprons are bleach resistant.

**We Believe in Sustainability,
Our Aprons Last Longer and Cost Less Per Wear.**

Bib Apron Guide

POCKET

regular size
72cm/28"
wide

full size
91cm/36"
wide

SLIDE	NON	PATENTED	SLIDE
ADJUSTABLE	ADJUSTABLE	INVISIBLE	ADJUSTABLE
HALTER	HALTER	HALTER	HALTER
		ADJUSTMENT	

DP210	DP55CN	DP55	DP03
RECYCLED POLYESTER	POLYCOTTON	POLYCOTTON	COTTON



Page 3 Page 7 Page 7 Page 5

NO POCKET

regular size
76cm/28"
wide

full size
91cm/36"
wide

NON	SLIDE	PATENTED	SLIDE
ADJUSTABLE	ADJUSTABLE	INVISIBLE	ADJUSTABLE
HALTER	HALTER	HALTER	HALTER
		ADJUSTMENT	

DP10NQ	DP200	DP10	DP18
POLYCOTTON	RECYCLED POLYESTER	POLYCOTTON	COTTON



Page 6 Page 3 Page 6 Page 5



1 DP53 REGULAR SIZE

Long Life Bib Apron

- 100% Recycled Polyester. 200 gsm
- Wash at 65°C
- W 71cm (28") x L 85cm (34")
- Bleach resistant
- Suitable for embroidery
- Laundry suitable

C	E
Black	White



2 DP03 REGULAR SIZE

Cotton Bib Apron with Pocket

- 100% Cotton. 280 gsm
- Wash at 65°C
- W 89cm (35") x L 100cm (40")
- Reinforced at tie tapes
- Anti tangle ties
- Large 2 section pocket
- Adjustable halter
- Suitable for embroidery
- Laundry suitable

A	D
Royal	Bottle Green
B	E
Navy	White
C	Q
Black	Griffin Grey



3 DP131 FULL SIZE

Originals Shift Apron

- 100% Cotton. 250 gsm
- Wash at 40°C
- W 97cm (38") x L 100cm (40")
- Do not bleach
- 2 deep practical side pockets
- Suitable for embroidery
- Made to fade

B	C
Navy	Black
C1	T
Storm Grey	Khaki



4 DP133 REGULAR SIZE

Originals Bib Apron with Pocket

- 100% Cotton. 250 gsm
- Wash at 40°C
- W 71cm (28") x L 91cm (36")
- Do not bleach
- Functional chest pocket and 2 hip pockets
- Suitable for embroidery
- Reinforced at tie tapes
- Made to fade

B	C1	C	T
Navy	Storm Grey	Black	Khaki

5 DP18 FULL SIZE

Cotton Bib Apron

- 100% Cotton. 280 gsm
- Wash at 60°C
- W 89cm (35") x L 100cm (40")
- Bleach resistant
- Adjustable halter
- Suitable for embroidery
- Reinforced at tie tapes
- Anti tangle ties

A	B	C
Royal	Navy	Black
D	E	Q
Bottle Green	White	Griffin Grey





Light Blue

1a Indigo

70% Cotton

200g

60°

W: 71cm
L: 91cm

Adjustable Halter

Bleach Resistant

LS Laundry Suitable

1 DP112 REGULAR SIZE

Cross Dyed Denim with Adjustable Halter

- 70% Cotton, 30% Polyester. 200 gsm
- Wash at 60°C
- W 71cm (28") x L 91cm (36")
- Invisible, adjustable patented halter system
- Self-material tie tapes
- Suitable for embroidery
- Bleach resistant
- Laundry suitable

1a DP111

As DP112 with Patch Pocket



BEST SELLER

Denny's LONDON

A

Royal

J

Purple

C1

Storm Grey

B

Navy

Q

Griffin Grey

F

Red

K

Biscuit

H

Ivory

E

White

35% Cotton

245g

65°

Adjustable Halter

W: 91cm
L: 91cm

Bleach Resistant

LS Laundry Suitable

C

Black

NEW Y

Light Grey

G

Claret

L

Peat

NEW R1

Light Olive

D

Bottle Green

W

Olive

2 DP10 FULL SIZE

Bib Apron with Adjustable Halter

- 65% Polyester, 35% Cotton. 245 gsm
- Wash at 65°C
- W 91cm (36") x L 91cm (36")
- Bleach resistant
- Invisible, adjustable patented halter system
- Self-material tie tapes
- Suitable for embroidery
- Laundry suitable



3

35% Cotton

245g

65°

W: 71cm
L: 91cm

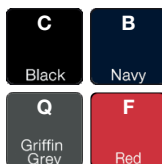
Bleach Resistant

LS Laundry Suitable

3 DP10NQ REGULAR SIZE

Bib Apron

- 65% Polyester, 35% Cotton. 245 gsm
- Wash at 65°C
- W 71cm (28") x L 91cm (36")
- Bleach resistant
- Black anti-tangle tie tapes
- Suitable for embroidery
- Laundry suitable



4

LOW COST

35% Cotton

200g

40°

W: 71cm
L: 91cm

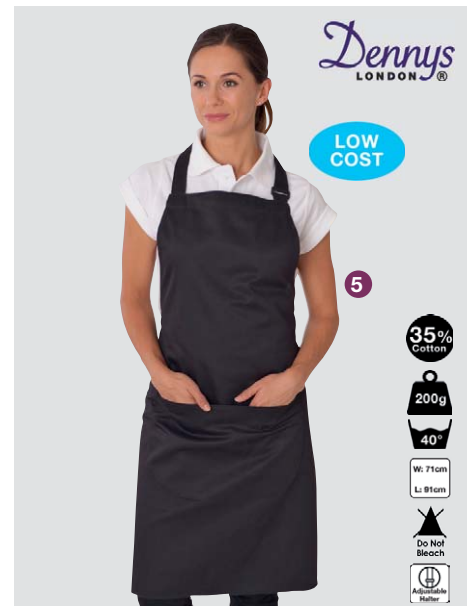
Do Not Bleach

Adjustable Halter

4 DP117 REGULAR SIZE

Black Low Cost Apron

- 65% Polyester, 35% Cotton. 200 gsm
- Wash at 40°C
- W 71cm (28") x L 91cm (36")
- Do not bleach
- Adjustable halter
- Suitable for embroidery
- Low cost



5

LOW COST

35% Cotton

200g

40°

W: 71cm
L: 91cm

Do Not Bleach

Adjustable Halter

5 DP119 REGULAR SIZE

Black Low Cost Apron with Pocket

- 65% Polyester, 35% Cotton. 200 gsm
- Wash at 40°C
- W 71cm (28") x L 91cm (36")
- Do not bleach
- Pocket
- Adjustable halter
- Suitable for embroidery
- Low cost



Dennys LONDON

1 DP130 REGULAR SIZE

Crossback Apron with Grey Tie Tapes

- 65% Polyester, 35% Cotton. 245 gsm
- Wash at 60°C
- W 71cm (28") x L 91cm (36")
- Cross back halter
- Suitable for embroidery
- Laundry suitable

35% Cotton
245g
60°C
W: 71cm
L: 91cm
Cross Back Halter
LS Laundry Suitable

F Red	G Claret	W Olive
C Black	C1 Storm Grey	D Bottle Green

Dennys LONDON

2 DP44 REGULAR SIZE

Printed Bib Apron

- 65% Polyester, 35% Cotton. 200 gsm
- Wash at 65°C
- W 71cm (28") x L 91cm (36")
- Suitable for embroidery
- Anti tangle ties

35% Cotton
200g
65°C
W: 71cm
L: 91cm

ST Black Pinstripe	E Black Check
---------------------------------	----------------------------

Dennys LONDON

3 DP55 FULL SIZE

Bib Apron with Pocket and Adjustable Halter

- 65% Polyester, 35% Cotton. 245 gsm
- Wash at 65°C. Laundry suitable
- W 91cm (36") x L 91cm (36")
- Bleach resistant. Pocket
- Invisible, adjustable patented halter system
- Anti-tangle tie tapes
- Suitable for embroidery

35% Cotton
245g
65°C
W: 91cm
L: 91cm
Bleach Resistant
Adjustable Halter
LS Laundry Suitable

Dennys LONDON

4 DP55CNQ REGULAR SIZE

Narrow Black Bib Apron with Pocket

- 65% Polyester, 35% Cotton. 245 gsm
- Wash at 65°C
- W 71cm (28") x L 91cm (36")
- Bleach resistant
- Anti-tangle tie tapes
- Suitable for embroidery
- Laundry suitable

35% Cotton
245g
65°C
W: 71cm
L: 91cm
Bleach Resistant
LS Laundry Suitable

Dennys LONDON

5 DP72

Black V-Neck Apron

- 65% Polyester, 35% Cotton. 245 gsm
- Wash at 65°C
- Bleach resistant
- Suitable for embroidery
- Laundry suitable
- Mens: W 91cm (36") x L 102cm (40") with 3 joined pockets and buckle halter adjuster **DP72C/L**
- Ladies: W 71cm (28") x L 81cm (32") with 2 joined pockets and press stud halter adjuster **DP72C/S**

35% Cotton
245g
65°C
Bleach Resistant
LS Laundry Suitable
Adjustable Halter

3 DP55 FULL SIZE

Bib Apron with Pocket and Adjustable Halter

- 65% Polyester, 35% Cotton. 245 gsm
- Wash at 65°C. Laundry suitable
- W 91cm (36") x L 91cm (36")
- Bleach resistant. Pocket
- Invisible, adjustable patented halter system
- Anti-tangle tie tapes
- Suitable for embroidery

A Royal	B Navy	C Black	D Bottle Green	E White
F Red	G Claret	K Biscuit	L Peat	Q Griffin Grey
C1 Storm Grey	R1 Light Olive	W Olive	Y Light Grey	

4 DP55CNQ REGULAR SIZE

Narrow Black Bib Apron with Pocket

- 65% Polyester, 35% Cotton. 245 gsm
- Wash at 65°C
- W 71cm (28") x L 91cm (36")
- Bleach resistant
- Anti-tangle tie tapes
- Suitable for embroidery
- Laundry suitable



5 DP72

Black V-Neck Apron

- 65% Polyester, 35% Cotton. 245 gsm
- Wash at 65°C
- Bleach resistant
- Suitable for embroidery
- Laundry suitable
- Mens: W 91cm (36") x L 102cm (40") with 3 joined pockets and buckle halter adjuster **DP72C/L**
- Ladies: W 71cm (28") x L 81cm (32") with 2 joined pockets and press stud halter adjuster **DP72C/S**





1 DP13 FULL SIZE

Striped Bib Apron with Pocket

- 100% Cotton. 280 gsm
- Wash at 65°C
- W 91cm (36") x L 97cm (38")
- 2 section large pocket
- Adjustable halter
- Self-material tie tapes
- Reinforced at tie tapes
- Suitable for embroidery
- Laundry suitable
- Anti tangle ties

2 DP85 FULL SIZE

Striped Bib Apron with Adjustable Halter

- 100% Cotton. 280 gsm
- Wash at 65°C
- W 91cm (36") x L 97cm (38")
- Adjustable halter
- Reinforced at tie tapes
- Suitable for embroidery
- Laundry suitable
- Anti tangle ties

3 DP85AQ-STRIPE FULL SIZE

Striped Apron with No Adjustable Halter

- 100% Cotton. 280 gsm
- Wash at 65°C
- W 91cm (36") x L 97cm (38")
- Reinforced at tie tapes
- Suitable for embroidery
- Laundry suitable
- Anti tangle ties





Dennys LONDON

NEW

1

- 35% Cotton
- 245g
- 65°
- W: 84cm
- L: 96cm
- LS Laundry Suitable
- Bleach Resistant

1 DP230A REGULAR SIZE

Regular Size Woven Butcher Stripe Apron

- 65% Polyester, 35% Cotton. 245 gsm
- Wash at 65°C
- W 84cm (33") x L 96cm (38")
- Anti-tangle ties
- Adjustable halter
- Side pocket
- Bleach resistant



DP230AQ (Not shown) REGULAR SIZE

Regular Size Woven Butchers Stripe Apron

- 65% Polyester, 35% Cotton. 245 gsm
- Wash at 65°C
- W 84cm (33") x L 96cm (38")
- Anti-tangle ties
- Bleach resistant
- Laundry suitable



2 DP50 REGULAR SIZE

Bib Apron Butchers Stripe with Pocket and Adjuster Apron

- 65% Polyester, 35% Cotton. 245 gsm
- Wash at 65°C
- W 84cm (33") x L 96cm (38")
- Anti-tangle ties
- Laundry suitable
- Do not bleach



Dennys LONDON

LAUNDRY QUALITY POLYESTER

2

- 35% Cotton
- 245g
- 65°
- W: 84cm
- L: 96cm
- Do Not Bleach
- LS Laundry Suitable
- Not Suitable Near High Heat
- Bleach Resistant



Dennys LONDON

washed denim

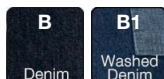
3

- 100% Cotton
- 330g
- 60°
- W: 71cm
- L: 91cm
- Made to Fade

3 DP101 REGULAR SIZE

Heavyweight Denim Bib Apron with Yellow Stitching

- 100% Cotton. 330 gsm
- Wash at 60°C
- W 71cm (28") x L 91cm (36")
- Suitable for embroidery



Dennys LONDON

unwashed denim

4

- 100% Cotton
- 330g
- 60°
- W: 71cm
- L: 91cm
- Adjustable Halter
- Made to Fade

4 DP102 REGULAR SIZE

Heavyweight Denim Bib Apron with Contrasting Pocket

- 100% Cotton. 330 gsm
- Wash at 60°C
- W 71cm (28") x L 91cm (36")
- 2 contrasting denim pockets
- Contrast denim adjustable halter and tie tapes
- Suitable for embroidery
- Made to fade



Dennys LONDON

5

- 100% Cotton
- 330g
- 65°
- W: 71cm
- L: 91cm
- Do Not Bleach
- Adjustable Halter
- LS Laundry Suitable
- Made to Fade

5 DP109 REGULAR SIZE

Heavyweight Heather Grey Denim Apron with Pocket

- 100% Cotton. 330 gsm
- Wash at 65°C
- W 71cm (28") x L 91cm (36")
- Hip pocket
- Do not bleach
- Adjustable halter
- Suitable for embroidery
- Laundry suitable





1 DE109

Prep Crossover Bib Apron

- 65% Polyester, 35% Cotton. 260 gsm
- Wash at 60°C
- W 71cm (28") x L 91cm (36")
- Pocket with pen slot
- Cross back halter
- Tea towel loop
- Suitable for embroidery
- Oxy brass eyelets



1 DE109C REGULAR SIZE

Prep Crossover Bib Apron

- 100% Cotton. 280 gsm
- Wash at 60°C
- W 71cm (28") x L 91cm (36")
- Bleach resistant
- Pocket with pen slot
- Cross back halter
- Suitable for embroidery
- Tea towel loop
- Oxy brass eyelets



2 DE113 DE113T FULL SIZE

Prep Utility Apron

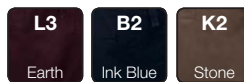
- 65% Polyester, 35% Cotton. 260 gsm
- Wash at 60°C
- W 91cm (36") x L 71cm (28")
- Do not bleach
- 3 large pockets
- Adjustable halter
- Suitable for embroidery
- Oxy brass eyelets
- Bleach resistant



3 DP125

Dennys Cotton Bib Apron with Metal Eyelet

- 100% cotton, 250gsm.
- W 71cm (28") x L 102cm (40")
- 2 deep pockets
- Adjustable halter
- Suitable for Embroidery



4 DF76 REGULAR SIZE

Bib Apron

- 65% Polyester, 35% Cotton. 200 gsm
- Wash at 50°C
- W 71cm (28") x L 91cm (36")
- Bleach resistant
- Adjustable halter
- Anti-tangle tie tapes
- Suitable for embroidery





1 DE110DNM-DENIM **REGULAR SIZE**

Prep Cotton Denim Apron (including halter)

- 100% Cotton. 330 gsm
- Wash at 65°C
- W 71cm (28") x L 91cm (36")
- Tea towel loop
- Self-material tie tapes
- Statement pocket with pen slot
- Suitable for embroidery
- Laundry suitable
- Made to fade
- Removable leather halter included

Available In:



1 DE111-DNM

Prep Cotton Denim Apron (without halter)

- Apron details as DE110DNM without halter. Allowing you to purchase multiple aprons with one interchangeable halter

Available In:



2 DE111-HALTER

Leather Halter for DE110DNM/DE110 BS

- Purchased separately

Available In:



- 100% Cotton
- 330g
- 65°
- W: 71cm
- L: 91cm
- LS Laundry Suitable
- Made to Fade



3 DE29

Professional Striped Apron

- 100% Cotton. 280 gsm
- Wash at 65°C
- W 71cm (28") x L 96cm (38")
- Adjustable halter
- Laundry suitable
- Suitable for embroidery
- Reinforced at tie tapes
- Anti tangle ties

Available In:



4 DE109BS-STRIPE **REGULAR SIZE**

Prep Crossover Apron, Butcher Stripe

- 100% Cotton. 280 gsm
- Wash at 60°C
- W 71cm (28") x L 91cm (36")
- Bleach resistant
- Cross back halter
- Suitable for embroidery
- Oxy brass eyelets

- 100% Cotton
- 280g
- 60°
- W: 71cm
- L: 91cm
- Bleach Resistant
- Cross Back Halter





LeChef

1

1 DE110BS-STRIPE **REGULAR SIZE**

Prep Butchers Stripe Apron with Halter

- 100% Cotton. 280 gsm
- Wash at 65°C
- W 71cm (28") x L 91cm (36")
- Bleach resistant
- Pocket
- Suitable for embroidery
- DE111BS (leather halter) can also be ordered separately
- Removable leather halter included
- Reinforced at tie tapes



1 DE111BS- STRIPE **REGULAR SIZE**

Prep Butchers Apron (without halter)

- Apron details as DE110BS without halter.
- Allowing you to purchase multiple aprons with one inter changeable halter

1 DE111 HALTER

Leather halter for DE110BS/DE110DNM

- Purchased separately

Available In:

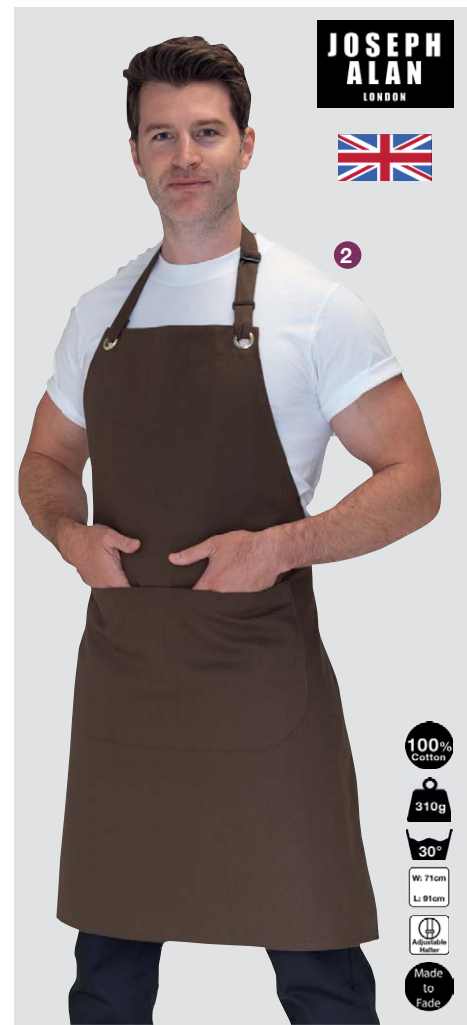


2 DP114 **REGULAR SIZE**

Made in the UK

Canvas Bib Apron with Pocket

- 100% Cotton. 310 gsm
- Wash at 30°C
- W 71cm (28") x L 91cm (36")
- Large pocket
- Adjustable halter
- Suitable for embroidery
- Made to Fade
- Oxy brass eyelets



JOSEPH ALAN LONDON



2

JOSEPH ALAN LONDON

Maximum Comfort No Pressure On Neck



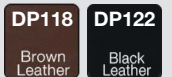
3



3 DP122 **REGULAR SIZE**

Leather Apron

- Leather
- W 64cm (25") x L 81cm (32")
- Do not wash
- Do not bleach
- Strap to attach leather pocket
- Pocket and pen pocket
- Suitable for embroidery



3a DP118B/DP122B

Leather Belt

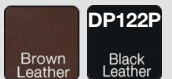
- Leather
- S to L
- Do not wash
- Do not bleach



3b DP118P/DP122P

Detachable Leather Pocket for DP118

- Leather
- W 20cm (8") x L 26cm (10") x D 4cm (2")
- Do not wash
- Do not bleach
- Suitable for embroidery

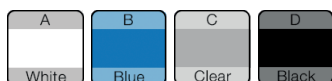




- 100% PVC
- 360g
- W: 94cm
L: 104cm
- Waterproof
- Heat Resistant
Heat High Press

1 DP16 FULL SIZE
Coloured PVC Waterproof Bib Apron
 - 100% PVC. 360 gsm
 - Hand wash
 - Sizes W 94cm (37") x L 104cm (41")

Available In:



- 100% Polyurethane
- 130g
- W: 89cm
L: 99cm
- W: 71cm
L: 91cm
- Waterproof
- Heat Resistant
Heat High Press

2 DP19 FULL SIZE
Waterproof Polyurethane Bib Apron
 - 100% Polyurethane. 130 gsm
 - Hand wash
 - Sizes W 89cm (35") x L 99cm (39")

DP19D
 - Sizes W 71cm (28") x L 91cm (36")
 - Regular fit.
 - Solid black

Available In:



- 100% Cotton
- 310g
- W: 91cm
L: 102cm
- Waterproof
- Do Not Bleach
- Anti Bacterial
- Heat Resistant
Heat High Press

3 DP108 FULL SIZE
Waterproof Antibacterial Bib Apron
 - 100% Cotton with Archroma coating. 310 gsm
 - Hand wash
 - Sizes W 91cm (36") x L 102cm (40")

Available In:



- 35% Cotton
- 200g
- 65°
- W: 50cm
L: 57.5cm

4 DF86E
Childrens Apron Age 7-10
 - 35% Cotton, 65% Polyester. 200gsm
 - W 50cm (20") x L 57.5cm (22")
 - Suitable for embroidery
 - Wash at 65°C

5 DF98E
Childrens Apron Age 10-14
 - 35% Cotton, 65% Polyester. 200gsm
 - W 53.5cm (21") x L 79cm (31")
 - Suitable for embroidery
 - Wash at 65°C

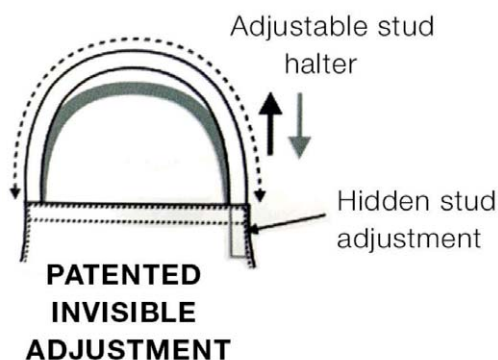
- 35% Cotton
- 200g
- 65°
- W: 53.5cm
L: 79cm



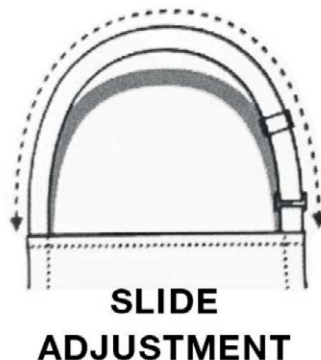
The bib apron is the ideal, low cost uniform option. It covers up staff clothing to make a consistent look. One size fits all, so it can be pool stock and available to all staff. It also gives you a large area for embroidery and badging.

But will it fit everyone?

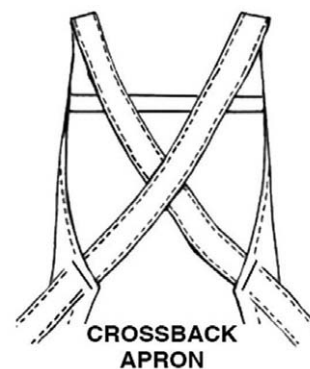
Unless it has an adjustable halter, it will not. Our new patented and registered system is smartly hidden. It is also laundry proof and gives you continuous adjustment, so that waist tapes will remain on the waist.



See:
 DP10 & DP112 page 6
 DP55 page 7



See:
 DP13 & DP85 page 8
 DP109 page 9
 DE113T & DF76 page 10



See:
 DP03 & DP18 page 5
 DP117 & DP119 page 6

Waist Apron Directory

Some of the fine detail for our Le Chef, Dennys and AFD aprons



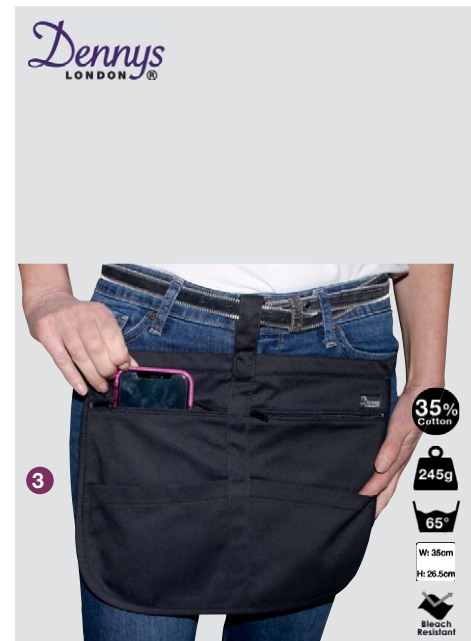
Length	Width	Product	Pocket	Page	Composition
Aprons above knee in descending order of length					
10"/ 25cms	Regular	DW15	✓	15	P/C
11"/ 28cms	Regular	DW41	✓	15	Cotton
12"/ 30cms	Regular	DW22	✓	15	P/C
14"/ 35cms	Regular	DW45	✓	14	Cotton
16"/41cms	Full	DP37	✓	15,16 &17	P/C
16"/41cms	Full	DP403	✓	17	P/C
16"/41cms	Regular	DP213	✓	17	P/C
16"/41cms	Regular	DP31CN	X	16	P/C
16"/41cms	Full	DP401	X	16	P/C
16"/41cms	Regular	DP213	✓	17	P/C
16"/41cms	Full	DP403	✓	17	P/C
17/44cms	Regular	DP121	✓	20	P/C
18"/46 cms	Full	DP103,	✓	16	Cotton
18"/46 cms	Full	DE115	✓	24	P/C
21"/53cms	Full	DP132	✓	19	Cotton
22"/56cms	Full	DP132	✓	19	Cotton
23"/58cms	Regular	DP100	X	18	Polyester
23"/58cms	Regular	DP110	✓	18	Polyester
23"/58cms	Regular	DP39CN	X	20	P/C
Aprons below knee Length in descending order of length					
24"/60cms	Full	DP601	✓	19	P/C
24"/60cms	Full	DP603	✓	19	P/C
24"/60cms	Full	DP802	X	19	P/C
24"/60cms	Full	DP49	x	21	P/C
24"/60cms	Regular	DP52	✓	20,21	P/C
24"/60cms	Regular	DP113	X	20	Cotton
27"/69cms	full	DP106	✓	23	Cotton
28"/71cms	Full	DP30	X	23	P/C
30"/76cms	Full	DP66	X	23	Cotton
30"/76cms	Full	DP66	X	23	Cotton
30"/76cms	Full	DP70	X	19	Cotton
31"/79cms	Full	DP61	✓	20	P/C
31"/79cms	Full	DP63	✓	20	P/C
36"/91cms	Full	DP01	X	23	Cotton
36"/91cms	Full	DP01	X	23	Cotton
37"/94cms	Full	DP82	X	21	P/C
41"/104cms	Full	DP71	✓	22	P/C
41"/104cms	Full	DP73	✓	22	P/C



1 DW45-DNM REGULAR SIZE
Extra Strong Money Pocket Apron
 - 100% Cotton. 280 gsm
 - Wash at 30°C
 - W 45cm (18") x L 35cm (14")
 - Suitable for embroidery
 - Made to fade



2 DW100
Tablet Apron
 - 100% Polyester
 - Wash at 40°C
 - W 23cm (9") x H 25cm (9.8")
 - One generous shaped pocket
 - Fully adjustable waist with quick release clip
 - One Size



3 DP59
Apron Money Pocket
 - 65% Polyester, 35% Cotton. 245 gsm
 - Wash at 65°C
 - W 35cm (13.7") x H 26.5cm (10.5")
 - 2 Zip pockets and open pockets
 - Loop for attaching to belt
 - Bleach Resistant
 - Self tie tape





1 DW15 REGULAR SIZE

Zipped Money Pocket Apron

- 65% Polyester, 35% Cotton. 245 gsm
- Wash at 65°C
- W 43cm (17") x L 25cm (10")
- Bleach resistant
- Suitable for embroidery
- Laundry suitable
- Anti tangle ties

35% Cotton
245g
65°
W: 43cm
L: 25cm
Bleach Resistant
LS Laundry Suitable

B Black



2 DW22 REGULAR SIZE

Money Pocket Aprons with Self Material Ties

- 65% Polyester, 35% Cotton. 245 gsm
- Wash at 65°C
- W 58cm (23") x L 30cm (12")
- Bleach resistant
- Suitable for embroidery
- Laundry suitable
- Self ties

35% Cotton
245g
65°
W: 58cm
L: 30cm
Bleach Resistant
LS Laundry Suitable

NEW Q Griffin Grey
NEW W Olive
L Peat
C1 Storm Grey
B Navy
C Black
D Bottle Green
F Red
G Claret
J Purple



3 DP37 FULL SIZE

Short Bar Apron with Pocket

- 65% Polyester, 35% Cotton. 245 gsm
- Wash at 65°C
- W 91cm (36") x L 41cm (16")
- Bleach resistant
- Suitable for embroidery
- Laundry suitable
- Multi pocket
- Anti tangle ties

35% Cotton
245g
65°
W: 91cm
L: 41cm
Bleach Resistant
LS Laundry Suitable

F Red
NEW C1 Storm Grey
NEW W Olive
NEW R1 Light Olive
A Royal
B Navy
C Black
D Bottle Green
G Claret
H Ivory
J Purple
K Biscuit
L Peat
Q Griffin Grey
E White
NEW Y Light Grey



4 DW41-DNM REGULAR SIZE

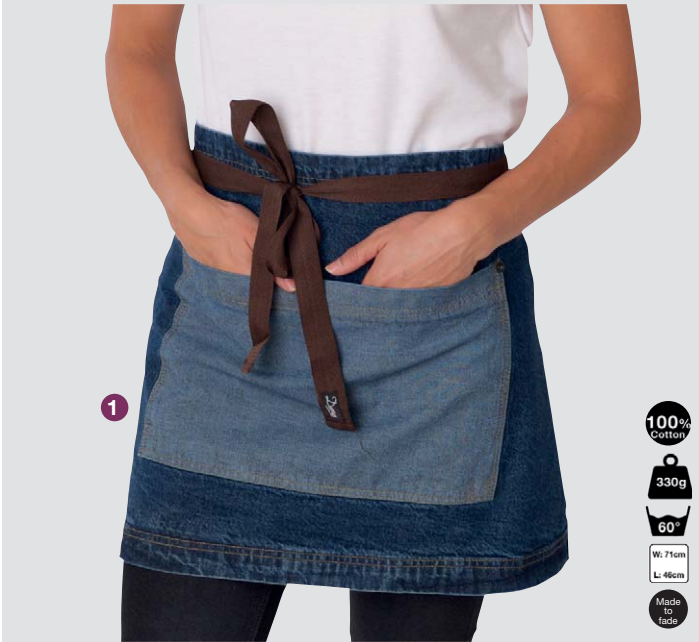
Denim Money Pocket Apron

- 100% Cotton. 280 gsm
- Wash at 30°C
- W 54cm (21.5") x L 28cm (11")
- Suitable for embroidery
- Made to fade
- Self ties

100% Cotton
280g
30°
W: 21.5"
L: 11.0"
Made to fade

DNM Blue Denim

Dennys
LONDON®



1



1 DP103 REGULAR SIZE

Denim Waist Apron with Contrasting Pocket

- 100% Cotton. 330 gsm
- Wash at 60°C
- W 71cm (28") x L 46cm (18")
- Suitable for embroidery
- Made to fade
- Contrast ties



2 DP31CN REGULAR SIZE

Short Black Bar Apron

- 65% Polyester, 35% Cotton. 245 gsm
- Wash at 65°C
- W 71cm (28") x L 41cm (16")
- Bleach resistant
- Suitable for embroidery
- Laundry suitable
- Anti tangle ties



Dennys
LONDON®



2



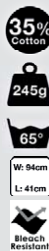
Dennys
LONDON®

NEW

See page 14 for our full lengths guide



3



3 DP401 FULL SIZE

Bistro Apron with Pocket

- 65% Polyester, 35% Cotton. 245 gsm
- Wash at 65°C
- W 94cm (37") x L 41cm (16")
- Bleach resistant
- Suitable for embroidery
- Laundry suitable
- Self ties



Dennys
LONDON®

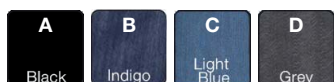


1 DP37DNM FULL SIZE

Denim Waist Apron with Pocket

- 70% Cotton, 30% Polyester. 200 gsm
- Wash at 65°C
- W 91cm (36") x L 41cm (16")
- Dry clean
- Multi pocket
- Bleach resistant
- Suitable for embroidery
- Laundry suitable
- Self ties

Available In:



Dennys
LONDON®



2 DP403 FULL SIZE

Bistro Apron with Side Pocket

- 65% Polyester, 35% Cotton. 245 gsm
- Wash at 65°C
- W 94cm (37") x L 41cm (16")
- Bleach resistant
- Suitable for embroidery
- Laundry suitable
- Self ties

Available In:



NEW



3 DP213 REGULAR SIZE

Cross Dyed Denim Waist Apron with Side Pocket

- 70% Cotton, 30% Polyester. 200 gsm
- Wash at 60°C
- W 71cm (28") x L 41cm (16")
- Bleach resistant
- Suitable for embroidery
- Laundry suitable
- Self ties

Available In:



Dennys
LONDON®



- 100% Polyester
- 200g
- 65°C
- W: 71cm
L: 58cm
- Bleach Resistant
- LS Laundry Suitable
- Crease Resistant
- Not Suitable Near High Heat



- 100% Polyester
- 200g
- 65°C
- W: 71cm
L: 58cm
- LS Laundry Suitable
- Crease Resistant
- Not Suitable Near High Heat

1 DP100 REGULAR SIZE

Colour Waist Apron – No Pocket

- 100% Recycled Polyester. 200 gsm
- Wash at 65°C
- W 71cm (28") x L 58cm (23")
- Bleach resistant
- Suitable for embroidery
- Laundry suitable
- Crease resistant

2 DP110 REGULAR SIZE

Colour Waist Apron with Pocket

- 100% Recycled Polyester. 200 gsm
- Wash at 65°C
- W 71cm (28") x L 58cm (23")
- Pocket [30cm (12") long 25cm (10") deep]
- Suitable for embroidery
- Laundry suitable
- Crease resistant

Available in 35 colours:

Z Sage	Y Light Grey	W Olive	U Zest	T Khaki	Q Griffin Grey	P Sunflower	L Peat	K Biscuit	J Purple	G Claret	F Red	E White	D1 Orange
D Bottle Green	C1 Storm Grey	C Black	B Navy	A1 Hot Pink	A Royal	Z1 Ginger	Y1 Pebble	M1 Brick	W1 Pumpkin	U1 Grape	Q1 Berry		
S1 Emerald	R1 Light Olive	P1 Lime	N Postman	M Light Blue	L1 Mid Blue	K1 Sea Grass	E1 Chilli Red	X1 Slate					

Dennys LONDON®



1

- 100% Cotton
- 280g
- 65°
- W: 91cm
- L: 76cm
- LS Laundry Suitable

1 DP70 FULL SIZE

Classic Cotton Striped Waist Apron

- 100% Cotton. 280 gsm
- Wash at 65°C
- W 91cm (36") x L 76cm (30")
- Suitable for embroidery
- Laundry suitable



Dennys LONDON®



2

- 100% Cotton
- 250g
- 40°
- W: 91cm
- L: 53cm
- Do Not Bleach
- Made to fade

2 DP132 FULL SIZE

Originals Waist Apron

- 100% Cotton. 250 gsm
- Wash at 40°C
- W 91cm (36") x L 53cm (22")
- Do not bleach
- Side pockets
- Suitable for embroidery
- Made to fade
- Self ties



Dennys LONDON®



3

- 35% Cotton
- 245g
- 65°
- W: 94cm
- L: 60cm
- Bleach Resistant
- LS Laundry Suitable

3 DP601 FULL SIZE

Wide Bistro Apron with Front Pocket

- 65% Polyester, 35% Cotton. 245 gsm
- Wash at 65°C
- W 94cm (37") x L 60cm (24")
- Bleach resistant
- Suitable for embroidery
- Laundry suitable
- Self ties



Dennys LONDON®

NEW



4

- 35% Cotton
- 245g
- 65°
- W: 94cm
- L: 60cm
- Bleach Resistant
- LS Laundry Suitable

4 DP603 FULL SIZE

Wide Bistro Apron with Side Pocket

- 35% Cotton, 65% Polyester. 245 gsm
- Wash at 65°C
- W 94cm (37") x L 60cm (24")
- Bleach resistant
- Suitable for embroidery
- Laundry suitable
- Self ties



5 DP802 FULL SIZE

Centre-Split Apron

- 65% Polyester, 35% Cotton. 245 gsm
- Wash at 65°C
- W 94cm (37") x L 60cm (24")
- Bleach resistant
- Suitable for embroidery
- Laundry suitable
- Anti tangle ties



Long version available
DP82
Page 21

Dennys LONDON®

NEW



5

- 35% Cotton
- 245g
- 65°
- W: 94cm
- L: 60cm
- Bleach Resistant
- LS Laundry Suitable



1 DP113 REGULAR SIZE

Cross Dyed Denim Waist Apron

- 70% Cotton, 30% Polyester. 200 gsm
- Wash at 60°C
- W 71cm (28") x L 61cm (24")
- Bleach resistant
- Suitable for embroidery
- Laundry suitable
- Self ties



2 DP61 FULL SIZE

Bistro Apron with Pocket in 11 Colours

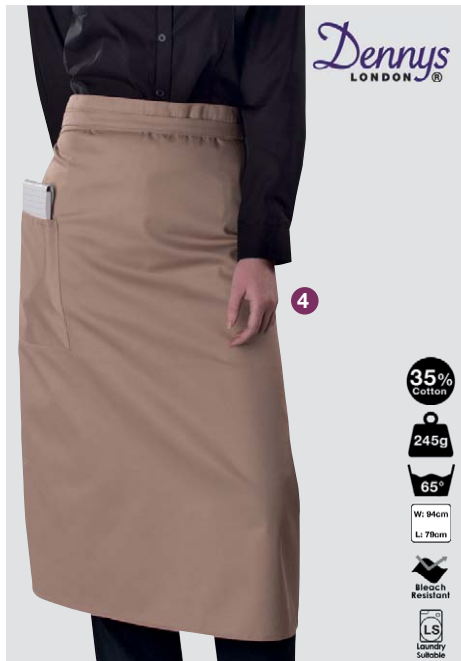
- 65% Polyester, 35% Cotton. 245 gsm
- Wash at 65°C
- W 94cm (37") x L 79cm (31")
- Bleach resistant
- Suitable for embroidery
- Laundry suitable
- Self tie tapes



3 DP49CN REGULAR SIZE

Waist Apron without Pocket

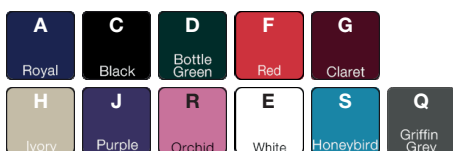
- 65% Polyester, 35% Cotton. 245 gsm
- Wash at 65°C
- W 71cm (28") x L 58cm (23")
- Bleach resistant
- Suitable for embroidery
- Laundry suitable
- Anti tangle tapes



4 DP63 FULL SIZE

Bistro Apron with Side Pocket in 11 Colours

- 65% Polyester, 35% Cotton. 245 gsm
- Wash at 65°C
- W 94cm (37") x L 79cm (31")
- Bleach resistant
- Suitable for embroidery
- Laundry suitable
- Self tie tapes



5 DP52CN REGULAR SIZE

Waist Apron with Pocket

- 65% Polyester, 35% Cotton. 245 gsm
- Wash at 65°C
- W 71cm (28") x L 61cm (24")
- Bleach resistant
- Suitable for embroidery
- Laundry suitable
- Anti tangle tapes



6 DP121C REGULAR SIZE

Black Low Cost Waist Apron

- 65% Polyester, 35% Cotton. 200 gsm
- Wash at 40°C
- W 55cm (22") x L 44cm (17")
- Do not bleach
- Suitable for embroidery
- Large pocket
- Anti tangle tie tapes





1

35% Cotton
245g
65°
W: 91cm
L: 61cm
Bleach Resistant
LS Laundry Suitable

1 DP49 FULL SIZE

Waist Apron without Pocket

- 65% Polyester, 35% Cotton. 245 gsm
- Wash at 65°C
- W 91cm (36") x L 61cm (24")
- Bleach resistant
- Suitable for embroidery
- Laundry suitable
- Anti tangle tie tapes

C Black	F Red	B Navy	J Purple	NEW W Olive	E White	G Claret
NEW C1 Storm Grey	A Royal	Q Griffin Grey	K Biscuit	L Peat	D Bottle Green	



2

35% Cotton
245g
65°
W: 91cm
L: 61cm
Bleach Resistant
LS Laundry Suitable

2 DP52 FULL SIZE

Waist Apron in 14 Colours

- 65% Polyester, 35% Cotton. 245 gsm
- Wash at 65°C
- W 91cm (36") x L 61cm (24")
- Bleach resistant
- Suitable for embroidery
- Laundry suitable
- Anti tangle tie tapes

NEW W Olive	NEW C1 Storm Grey	C Black	A Royal	B Navy	E White	F Red
D Bottle Green	G Claret	H Ivory	J Purple	K Biscuit	Q Griffin Grey	L Peat



3

35% Cotton
245g
65°
W: 99cm
L: 94cm
Bleach Resistant
LS Laundry Suitable

3 DP82 FULL SIZE

Centre-Split Long Apron

- 65% Polyester, 35% Cotton. 245 gsm
- Wash at 65°C
- W 99cm (39") x L 94cm (37")
- Bleach resistant
- Suitable for embroidery
- Laundry suitable
- Anti tangle tie tapes

Available In:

B Black	A White
-------------------	-------------------

Short version available
DP802
Page 19

Dennys
LONDON®



1 DP73 FULL SIZE

Wide Bistro Apron with Side Pocket

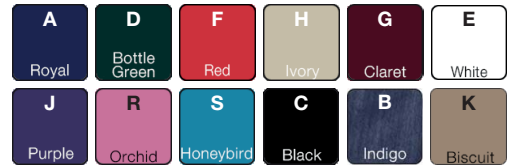
- 65% Polyester, 35% Cotton. 245 gsm
- Wash at 65°C
- W 94cm (37") x L 104cm (41")
- Bleach resistant
- Suitable for embroidery
- Laundry suitable



2 DP71 FULL SIZE

Wide Bistro Apron with Front Pocket

- 65% Polyester, 35% Cotton. 245 gsm
- Wash at 65°C
- W 94cm (37") x L 104cm (41")
- Bleach resistant
- Suitable for embroidery
- Laundry suitable



**JOSEPH
ALAN**
LONDON



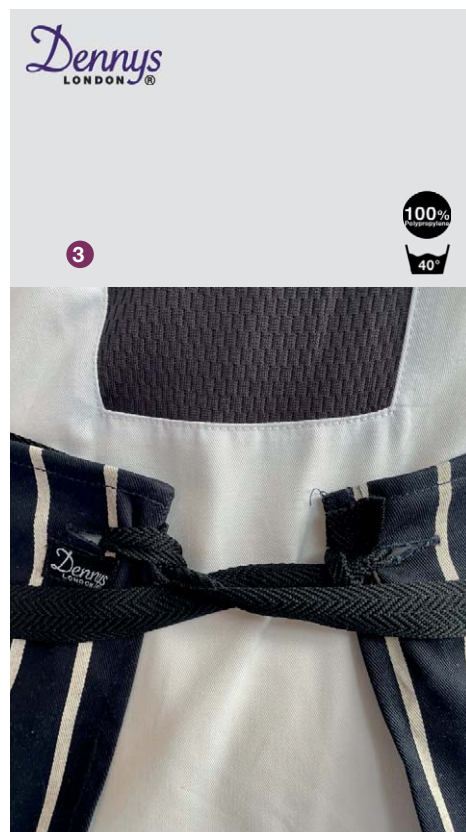
Call
Joseph Alan
on
020 7536 9411
to discuss
bespoke
uniforms



1 DP01 FULL SIZE
Chefs Square - Large
 - 100% Cotton. 280 gsm
 - Wash at 65°C
 - W 91cm (36") x L 91cm (36")
 - Anti tangle tie
 - Bleach resistant
 - Suitable for embroidery
 - Laundry suitable



2 DP66 FULL SIZE
Waist Apron
 - 100% Cotton. 280 gsm
 - Wash at 65°C
 - W 91cm (36") x L 76cm (30")
 - Anti tangle tie
 - Bleach resistant
 - Reinforced at tie tapes
 - Suitable for embroidery
 - Laundry suitable



3 AP98
Replacement Apron Ties
 - 100% Polypropylene
 - Wash at 40°C
 - Size 1m
 - Anti tangle tie



4 DP30 FULL SIZE
Long Life Polyester Waist Apron
 - 100% Recycled Polyester. 195 gsm
 - Wash at 65°C
 - W 91cm (36") x L 71cm (28")
 - Anti tangle tie
 - Bleach resistant
 - Suitable for embroidery
 - Laundry suitable





leChef™

JOSEPH ALAN LONDON



NEW

1

2

35% Cotton
245g
65°
W: 91cm
L: 45cm
Bleach Resistant

100% Cotton
310g
30°
W: 71cm
L: 46cm

1 DE115 FULL SIZE
DE115T

Prep Utility Waist Apron

- 65% Polyester, 35% Cotton. 245 gsm
- Wash at 65°C
- W 91cm (36") x L 45cm (18")
- Bleach resistant
- Pocket
- Suitable for embroidery

W Olive	B Navy	C Black	T Khaki
------------	-----------	------------	------------

2 DP115 REGULAR SIZE

Canvas Bar Apron

- 100% Cotton, 310 gsm
- Wash at 30°C
- W 71cm (28") x L 48cm (19")
- Suitable for embroidery

T Khaki	T1 Beige
------------	-------------



Sustainable Workwear

Sustainability requires products that are ethically produced and durable. For over 30 years, Dennys Brands fabrics and garments have proven their durability. Quality is fundamental to our products and we desire a more ethical world for all.

Dennys Brands approach to sustainability can be summed up in four categories:

SUSTAINABILITY

We work with our trusted manufacturers to seek sustainable methods of producing our garments right through the manufacturing cycle from farmer to finished garment.

DURABILITY

We work hard to develop and design fabrics and garments that work with your professional needs in mind.

AFFORDABILITY

We look at PRICE PER WEAR. Garments which last longer and wash well contribute to our sustainability and lack of waste in the world.

WORKING IN PARTNERSHIP FOR A SUSTAINABLE FUTURE

We have excellent relationships with our overseas and UK manufacturers. We know exactly where and how each of our garments are being made, and that every item is made via our list of approved suppliers.

AT DENNYS, WE CARE ABOUT THE ENVIRONMENT – DO YOU?

Have you cottoned on?

**There is no substitute for cotton
in the kitchen!**

**It has low thermal conductivity and high water
absorbency.**

**We believe a 100% cotton apron should be worn
over any clothing used by chefs.
Our cotton aprons are DP03, DP131, DP133,
DP18, DP13, DP85 and DP85AQ.**

**We are proud that 90% of our cotton comes
from well managed cotton producing farms
that are registered to the Better Cotton Initiative***

**Find out more about our cotton:
www.dennys.co.uk/good-cotton**

AFD

leChefTM
PROFESSIONAL

Dennys
LONDON[®]

**DENNYS
BRANDS**

***All Le Chef and selected other ranges**

leChef™ **Premium fabric**

NEW

SLIM FIT

1

- 50% Cotton
- 250g
- 60°
- XS TO 4XL
- Do Not Bleach
- Press Stud
- UNISEX FIT

1 DF130
Knitted Pique Chef Shirt
 - 50% Cotton, 50% Polyester. 250 gsm
 - Wash at 60°C
 - Sizes XS to 4XL
 - Do not bleach
 - StayCool System
 - Sleeve pen pocket
 - Press studs
 - Suitable for embroidery



StayCool System

2 DF108
Le Grand Shirt
 - 100% Pima Cotton. 170 gsm
 - Wash at 65°C
 - Sizes XS to 2XL, including Slim Fit SLS, SLM, SLL
 - StayCool System
 - Stainless steel press studs
 - Suitable for embroidery
 - Chest pocket
 - Sleeve pen pocket

E **C**
 White Black

leChef™ **The ultimate pima cotton**

SLIM FIT AVAILABLE

2

NEW

- PIMA COTTON
- 170g
- 65°
- XS TO 2XL
- Available in Slim Fit SLS, SLM, SLL
- Press Stud
- UNISEX FIT

leChef™

SLIM FIT AVAILABLE

3

- 35% Cotton
- 200g
- 65°
- XS TO 2XL
- Available in Slim Fit SLS, SLM, SLL
- Bleach Resistant
- Press Stud
- LS Laundry Suitable
- Crease Resistant
- UNISEX FIT

3 DF118
Prep Jacket
 - 65% Polyester, 35% Cotton. 200 gsm
 - Wash at 65°C
 - Sizes XS to 2XL, including Slim Fit SLS, SLM, SLL
 - Bleach resistant
 - StayCool System
 - Stainless steel press studs
 - Short sleeve
 - Suitable for embroidery
 - Laundry suitable
 - Crease resistant
 - Chest pocket
 - Sleeve pen pocket



E **C**
 Black White Black



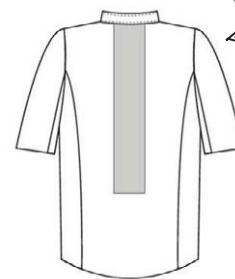
1

- 35% Cotton
- 115g
- 40°
- XS to 2XL
- Press Stud
- Ladies

1 DF120F

Cool & Lite Prep Ladies Shirt

- 65% Polyester, 35% Cotton. 115 gsm
- Wash at 40°C
- Sizes XS to 2XL
- StayCool System
- Stainless steel press studs
- Long sleeve
- Suitable for embroidery

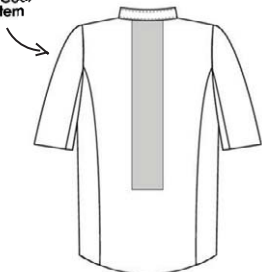


- | | |
|-------|-----------------------|
| E | C1 |
| White | Storm Grey with Black |



2

- 35% Cotton
- 115g
- 40°
- XS to 2XL
- Press Stud
- Mens



2 DF120M

Cool & Lite Prep Mens Shirt

- 65% Polyester, 35% Cotton. 115 gsm
- Wash at 40°C
- Sizes XS to 2XL
- StayCool System
- Press studs
- Short sleeve
- Suitable for embroidery

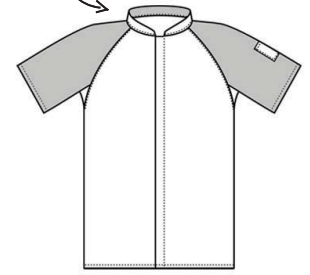
- | | |
|-------|-----------------------|
| E | C1 |
| White | Storm Grey with Black |



1 DE112

Prep Air Jacket

- 65% Polyester, 35% Cotton. 200 gsm
- Wash at 60°C
- Sizes XS to 2XL
- Bleach resistant
- StayCool System
- Stainless steel press studs
- Suitable for embroidery
- Laundry suitable



35% Cotton

200g

60°

XS TO 2XL

Bleach Resistant

Press Stud

LS Laundry Suitable

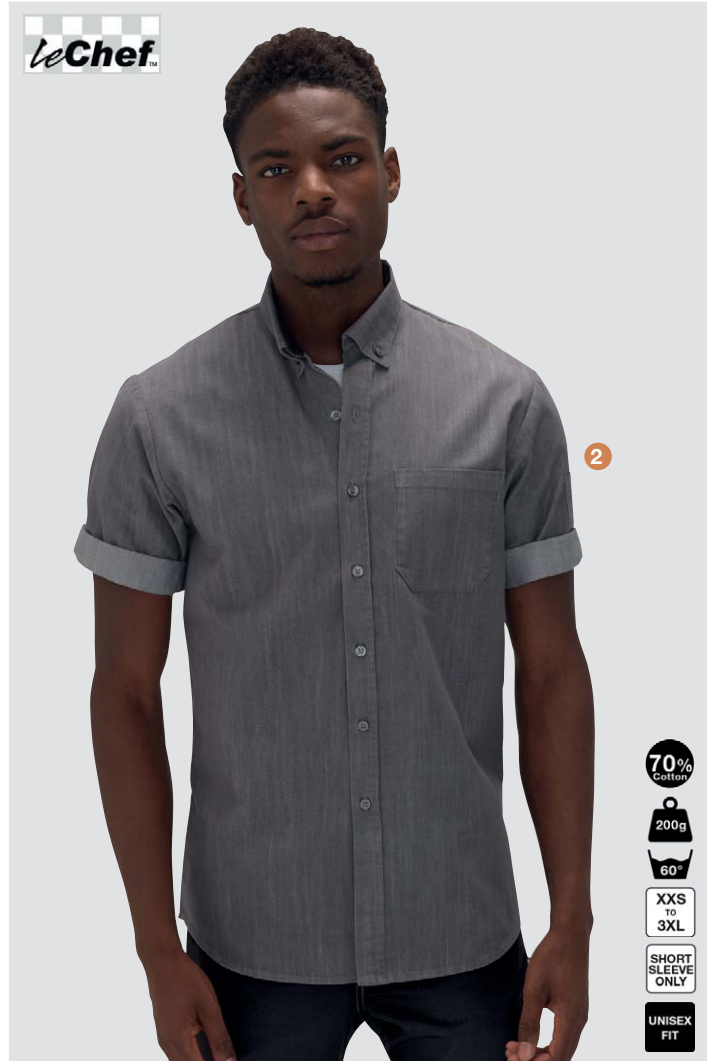
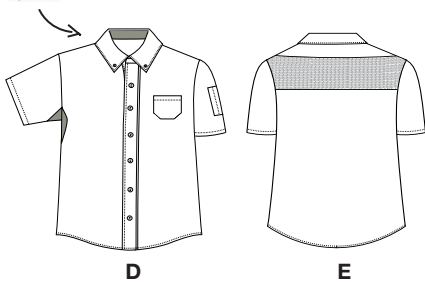
UNISEX FIT



2 DF116

Prep Chefs Shirt

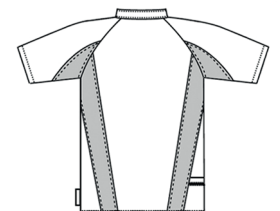
- 70% Cotton, 30% Polyester. 200 gsm
- Wash at 60°C
- Sizes XXS to 3XL
- StayCool System
- Buttons
- Short sleeve
- Suitable for embroidery



3 DE128

Cool & Lite Single Breasted Jacket

- 65% Polyester, 35% Cotton. 160 gsm
- Wash at 65°C
- Sizes XS to 2XL
- StayCool System
- Stainless steel press studs
- Short sleeve
- Suitable for embroidery
- Laundry suitable
- Breast pocket
- Bleach resistant



3

NEW

35% Cotton

160g

65°

XS TO 2XL

Press Stud

SHORT SLEEVE ONLY

LS Laundry Suitable

UNISEX FIT

Bleach Resistant

70% Cotton

200g

60°

XXS TO 3XL

SHORT SLEEVE ONLY

UNISEX FIT





1 DD08
Best Selling Long Sleeve Chef Jacket

- 65% Polyester, 35% Cotton. 200 gsm
- Wash at 65°C
- Sizes XXS to 4XL
- Bleach resistant
- Stainless steel press studs
- Suitable for embroidery
- Laundry suitable
- Unisex fastening
- French cuff
- Sleeve pen pocket



2 DD08S
Best Selling Short Sleeve Chef Jacket

- 65% Polyester, 35% Cotton. 200 gsm
- Wash at 65°C
- Sizes XXS to 4XL, including Slim Fit
- Bleach resistant
- Stainless steel press studs
- Suitable for embroidery
- Laundry suitable
- Unisex fastening
- Sleeve pen pocket



3 DD11
Easy-Care Long Sleeve Chef Jacket

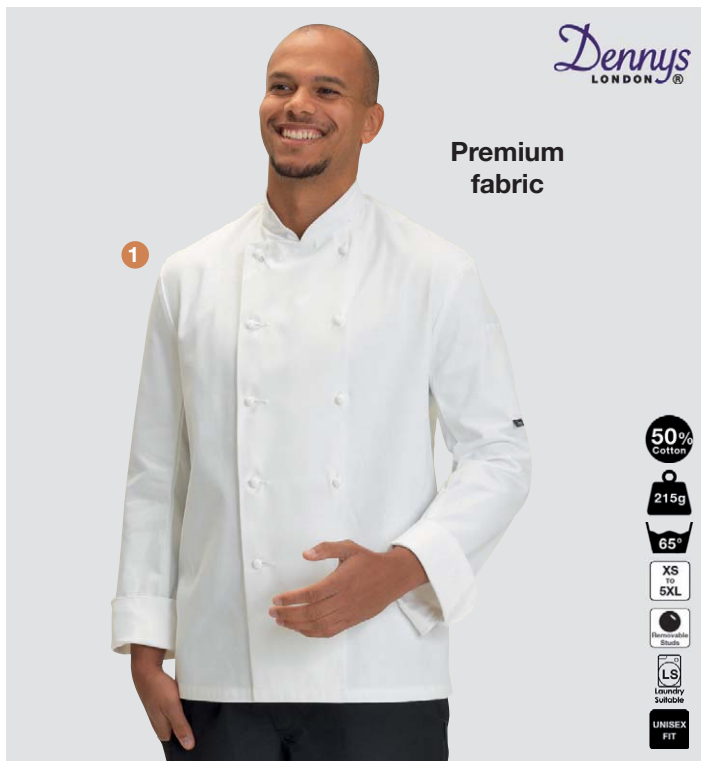
- 100% Recycled Polyester. 200 gsm
- Wash at 65°C
- Sizes XS to 4XL
- Bleach resistant
- Stainless steel press studs
- Suitable for embroidery
- Laundry suitable
- Crease resistant



4 DD11S
Easy-Care Short Sleeve Chef Jacket

- 100% Recycled Polyester. 200 gsm
- Wash at 65°C
- Sizes XS to 4XL
- Bleach resistant
- Stainless steel press studs
- Suitable for embroidery
- Laundry suitable
- Crease resistant





Premium fabric

1



1 DD02

Classic Long Sleeve Cotton Jacket

- 50% Cotton, 50% Polyester. 215gsm
- Wash at 65°C
- Sizes XS to 5XL
- Removable studs
- Suitable for embroidery
- Laundry suitable
- French cuff
- Sleeve pen pocket
- Unisex fastening



Premium fabric

2



2 DD02S

Classic Short Sleeve Chef Jacket

- 50% Cotton, 50% Polyester. 215gsm
- Wash at 65°C
- Sizes XS to 5XL
- Removable studs
- Suitable for embroidery
- Laundry suitable
- Sleeve pen pocket
- Unisex fastening



3



3 DD20

Long Sleeve Chef Jacket

- 65% Polyester, 35% Cotton. 200 gsm
- Wash at 65°C
- Sizes XXS to 3XL
- Bleach resistant
- Removable studs
- Suitable for embroidery
- Laundry suitable
- French cuff
- Sleeve pen pocket
- Unisex fastening



4



4 DD20S

Short Sleeve Chef Jacket

- 65% Polyester, 35% Cotton. 200 gsm
- Wash at 65°C
- Sizes XXS to 3XL, including Slim Fit SLS, SLM, SLL
- Removable studs
- Suitable for embroidery
- Laundry suitable
- Sleeve pen pocket
- Unisex fastening





1

- 35% Cotton
- 200g
- 65°
- XXS to 4XL
- Capped Studs
- LS Laundry Suitable
- UNISEX FIT

1 DD56
Technicolour Long Sleeve Chef Jacket

- 65% Polyester, 35% Cotton. 200 gsm
- Wash at 65°C
- Sizes XXS to 4XL
- Stainless steel capped studs
- Suitable for embroidery
- Laundry suitable
- Sleeve pen pocket

A Royal	B Navy	D Bottle Green	F Red
R Orchid	W Olive	Y Light Grey	C1 Storm Grey



2

- 35% Cotton
- 200g
- 65°
- XS to 4XL
- Capped Studs
- LS Laundry Suitable
- UNISEX FIT

2 DD56S
Technicolour Short Sleeve Chef Jacket

- 65% Polyester, 35% Cotton, 200 gsm
- Wash at 65°C
- Sizes XS to 4XL
- Stainless steel capped studs
- Suitable for embroidery
- Laundry suitable
- Sleeve pen pocket

A Royal	B Navy	D Bottle Green	F Red
R Orchid	W Olive	Y Light Grey	C1 Storm Grey



LOW COST

3

- 35% Cotton
- 180g
- 65°
- XXS to 4XL
- Press Stud
- UNISEX FIT

3 DD70
Low Cost Long Sleeve Chef Jacket

- 65% Polyester, 35% Cotton. 180 gsm
- White wash at 65°C, Black wash at 40°C
- Sizes XXS to 4XL
- Stainless steel press studs
- Suitable for embroidery
- Low cost

E White	C Black
-------------------	-------------------



LOW COST

4

- 35% Cotton
- 180g
- 65°
- XXS to 4XL
- Press Stud
- UNISEX FIT

4 DD70S
Low Cost Short Sleeve Chef Jacket

- 65% Polyester, 35% Cotton. 180 gsm
- White wash at 65°C, Black wash at 40°C
- Sizes XXS to 4XL
- Stainless steel press studs
- Suitable for embroidery
- Low cost

E White	C Black
-------------------	-------------------



1

Dennys LONDON®

Premium fabric

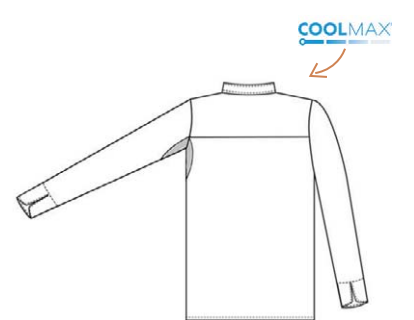
- 50% Cotton
- 200g
- 65°
- XS to 3XL
- Bleach Resistant
- Capped Studs
- LS Laundry Suitable
- Ladies

1 DD33

Improved Design and Fit Chef Jacket

- White 50% Cotton, 50% Polyester. Black 65% Polyester, 35% Cotton. 200 gsm
- Wash at 65°C
- Sizes XS to 3XL
- Bleach resistant
- Stainless steel capped studs
- Suitable for embroidery
- Laundry suitable
- French cuff
- Pen pocket

E **C**
White Black



COOLMAX



2 DD33S Short sleeve

Improved Design and Fit Chef Jacket

- White 50% Cotton, 50% Polyester. Black 65% Polyester, 35% Cotton. 200 gsm
- Wash at 65°C
- Sizes XS to 3XL
- Bleach resistant
- Stainless steel capped studs
- Suitable for embroidery
- Laundry suitable
- French cuff
- Pen pocket

E **C**
White Black

COOLMAX



2

Dennys LONDON®

Premium fabric

- 50% Cotton
- 200g
- 65°
- XS to 3XL
- Bleach Resistant
- Capped Studs
- LS Laundry Suitable
- Ladies



3

leChef™

Premium fabric

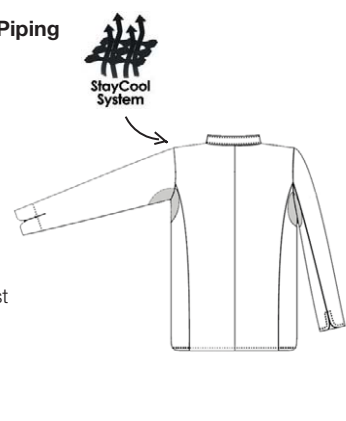
- 50% Cotton
- 200g
- 65°
- XXS to 3XL
- Capped Studs
- LS Laundry Suitable
- UNISEX FIT

3 DE49D

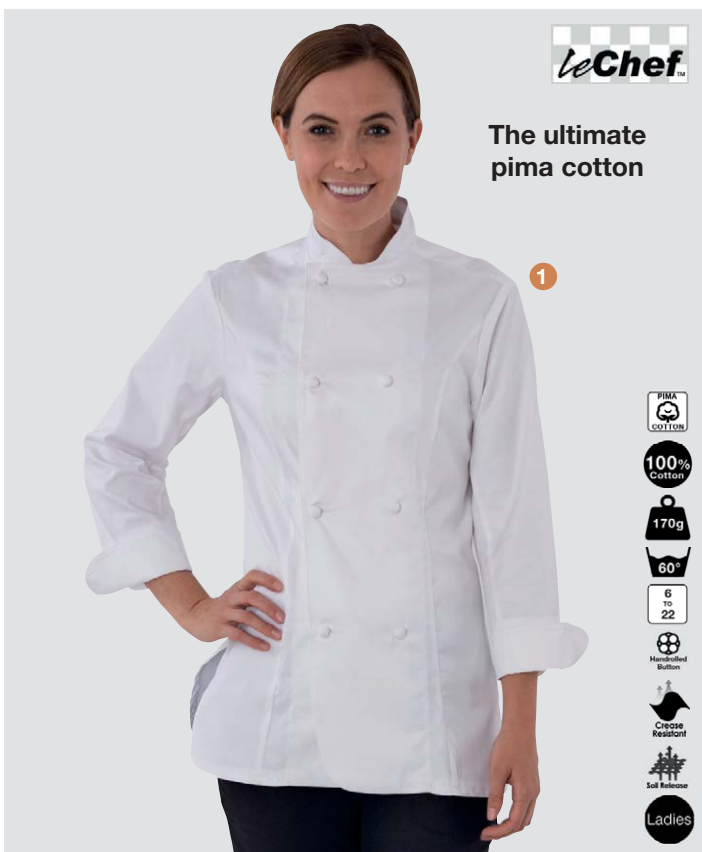
Executive Chef Jacket with Black Piping

- 50% Cotton, 50% Polyester. 200 gsm
- Wash at 65°C
- Sizes XXS to 3XL
- Stainless steel capped studs
- Long sleeve
- StayCool System
- Suitable for embroidery
- Laundry suitable
- French cuff
- Breast pocket
- This can be shortened at additional cost

StayCool System



White with Black Piping



The ultimate pima cotton

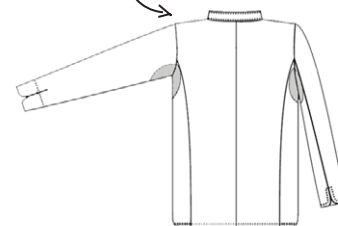
1

-
-
-
-
-
-
-
-
-

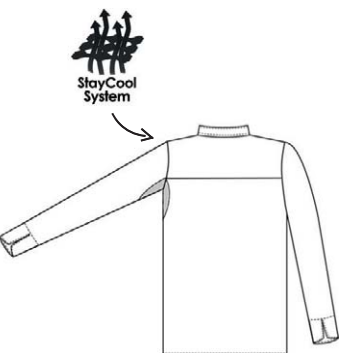
1 DF115 DF115S Available in short sleeve

Le Grand Ladies Long Sleeve Chef Jacket

- 100% Pima Cotton. 170 gsm
- Wash at 60°C
- Sizes 6 to 22
- Handrolled buttons
- Crease resistant
- Soil release
- StayCool System
- Suitable for embroidery
- French cuff



-
-



2 DE50

Professional Long Sleeve Tunic

- 65% Polyester, 35% Cotton. 200 gsm
- Wash at 65°C
- Sizes XXS to 4XL
- Stainless steel capped studs
- StayCool System
- Suitable for embroidery
- Laundry suitable
- French cuff
- Sleeve pen pocket

-



2

-
-
-
-
-
-
-

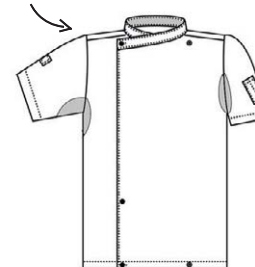


3

3 DE50S

Professional Short Sleeve Tunic

- 65% Polyester, 35% Cotton. 200 gsm
- Wash at 65°C
- Sizes XXS to 4XL
- Stainless steel capped studs
- StayCool System
- Suitable for embroidery
- Laundry suitable
- Pen pocket



-

See page 80 for size chart

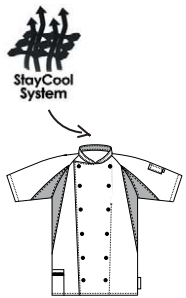


- 35% Cotton
- 200g
- 65°C
- XS to 4XL
- Capped Studs
- LS Laundry Suitable
- UNISEX FIT

1 DF91S Short sleeve

Laundry Tough Tunic

- 65% Polyester, 35% Cotton. 200 gsm
- Wash at 65°C
- Sizes XS to 4XL
- Stainless steel capped studs
- StayCool System
- Suitable for embroidery
- Laundry suitable
- Unisex fastening
- Sleeve pen pocket



2 DE11

Cool & Lite Short Sleeve Lightweight Jacket

- 65% Polyester, 35% Cotton. 160 gsm
- Wash at 65°C
- Sizes XS to 2XL
- StayCool System
- Stainless steel capped studs
- Suitable for embroidery
- Laundry suitable
- Bleach resistant

B White	C Black
CG Grey Black	A Black White
G Grey White	



- 35% Cotton
- 160g
- 65°C
- XS to 2XL
- Capped Studs
- LS Laundry Suitable
- Bleach Resistant
- UNISEX FIT

Branded studs coming soon



Premium fabric

- 50% Cotton
- 200g
- 65°C
- XXS to 2XL
- Capped Studs
- LS Laundry Suitable
- Bleach Resistant
- UNISEX FIT

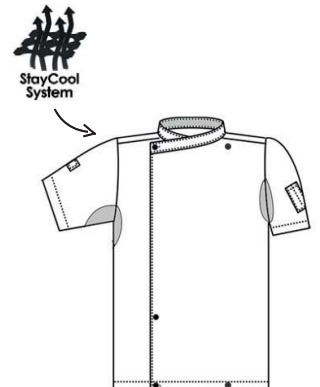
Branded studs coming soon



3 DE20

Cool & Lite Short Sleeve Tunic

- 50% Cotton, 50% Polyester. 200 gsm
- Wash at 65°C
- Sizes XXS to 2XL
- StayCool System
- Stainless steel capped studs
- Suitable for embroidery
- Laundry suitable
- Bleach resistant
- Unisex fastening
- Zipped pocket

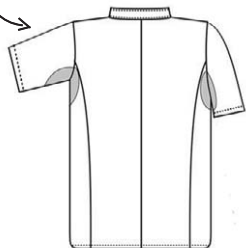


E White	C Black
-------------------	-------------------



The ultimate pima cotton

1



2 DE47S

Le Grand Chef Short Sleeve Jacket

- 100% Pima Cotton. 170 gsm
- Wash at 65°C
- Sizes 36" to 52"
- Handrolled buttons
- Sleeve pen pocket
- Unisex fastening
- StayCool System
- Crease resistant
- Soil release
- Suitable for embroidery

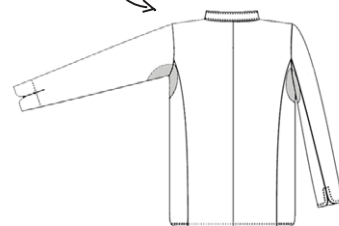


Black

1 DE47

Le Grand Chef Jacket

- 100% Pima Cotton. 170 gsm
- Wash at 65°C
- Sizes 36" to 52"
- Soil release
- Handrolled buttons
- Suitable for embroidery
- Long sleeve
- StayCool System
- Crease resistant
- French cuff
- Sleeve pen pocket
- Unisex fastening

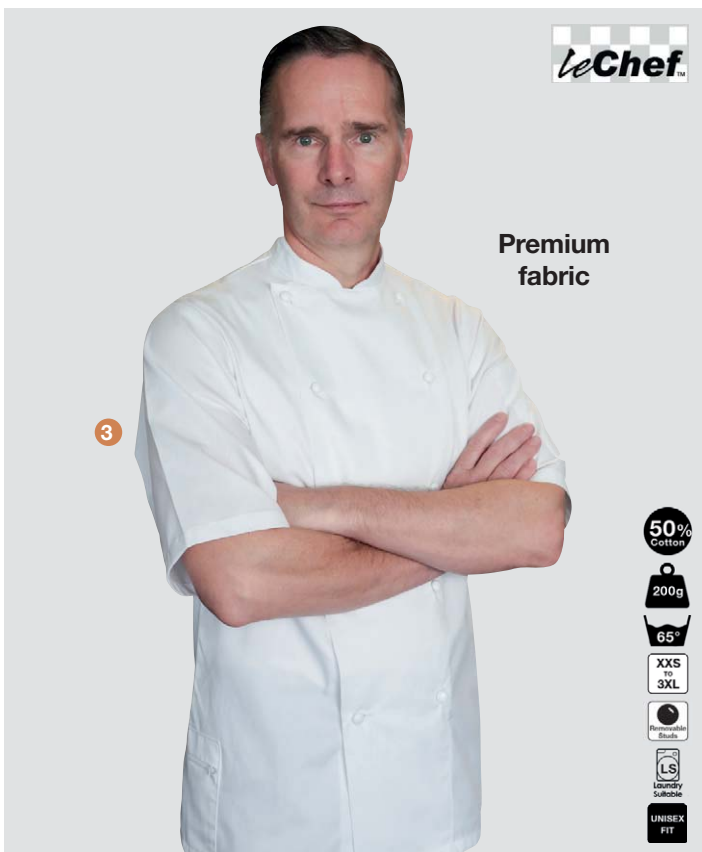


White



The ultimate pima cotton

2



Premium fabric

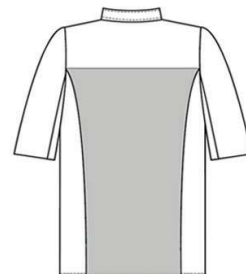
3



3 DE21S

Short Sleeve Jacket with StayCool Back

- 50% Cotton, 50% Polyester. 200 gsm
- Wash at 65°C
- Sizes XXS to 3XL
- Removable studs
- StayCool System
- Suitable for embroidery
- Laundry suitable
- Unisex fastening
- Zipped pocket
- Sleeve pen pocket



White

See page 80 for size chart



1

Branded studs coming soon

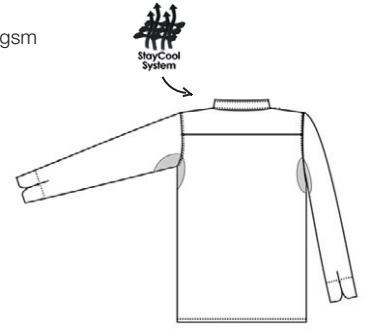



35% Cotton
200g
65°
XS to 4XL
Bleach Resistant
Capped Studs
LS Laundry Suitable
UNISEX FIT

1 DE92E/F

Long Life Executive Jacket


- 65% Polyester, 35% Cotton. 200 gsm
- Wash at 65°C
- Sizes XS to 4XL
- Bleach resistant
- StayCool System
- Stainless steel capped studs
- Suitable for embroidery
- Laundry suitable
- French cuff
- Sleeve pen pocket

2

Long Life Executive Jacket

- 65% Polyester, 35% Cotton. 200 gsm
- Wash at 65°C
- Sizes XS to 4XL, including Slim Fit SLS, SLM, SLL
- Bleach resistant
- StayCool System
- Stainless steel capped studs
- Suitable for embroidery
- Laundry suitable
- Sleeve pen pocket



E Griffin Grey **F** Black

SLIM FIT AVAILABLE



2

Branded studs coming soon



35% Cotton
200g
65°
XS to 4XL
Bleach Resistant
Capped Studs
LS Laundry Suitable
UNISEX FIT



3

Laundry Tough Executive Jacket

- 65% Polyester, 35% Cotton. 200 gsm
- Wash at 65°C
- Sizes XXS to 5XL
- Removable studs and buttons
- StayCool System
- Short sleeve
- Suitable for embroidery
- Laundry suitable
- Bleach resistant
- Unisex fastening
- It comes with spare white removeable studs. Other coloured removeable studs available to purchase page



35% Cotton
200g
65°
XXS to 5XL
Removable Studs
LS Laundry Suitable
UNISEX FIT

3 DE92GS

Laundry Tough Executive Jacket

- 65% Polyester, 35% Cotton. 200 gsm
- Wash at 65°C
- Sizes XXS to 5XL
- Removable studs and buttons
- StayCool System
- Short sleeve
- Suitable for embroidery
- Laundry suitable
- Bleach resistant
- Unisex fastening
- It comes with spare white removeable studs. Other coloured removeable studs available to purchase page



SLIM FIT AVAILABLE

Branded studs coming soon



Premium fabric

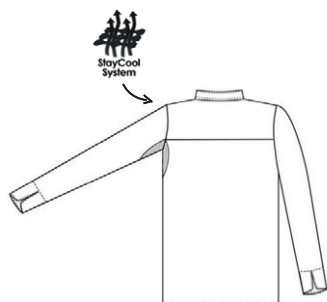
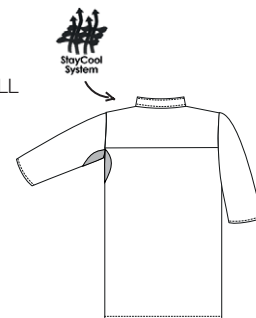
1



1 DE92S

Original Executive Jacket

- 50% Cotton, 50% Polyester. 200 gsm
- Wash at 65°C
- Sizes XXS to 5XL, including Slim Fit SLS, SLM, SLL
- Stainless steel capped studs
- StayCool System
- Suitable for embroidery
- Laundry suitable



2 DE92

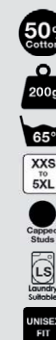
Original Executive Jacket

- 50% Cotton, 50% Polyester. 200 gsm
- Wash at 65°C
- Sizes XXS to 5XL
- StayCool System
- Stainless steel capped studs
- Suitable for embroidery
- Laundry suitable
- French cuff
- Sleeve pen pocket



Premium fabric

2



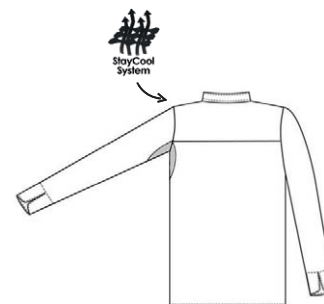
Branded studs coming soon



3 DE92G

Laundry Tough Executive Jacket

- 65% Polyester, 35% Cotton. 200 gsm
- Wash at 65°C
- Sizes XXS to 5XL
- Removable studs
- StayCool System
- Suitable for embroidery
- Laundry suitable
- Sleeve pen pocket
- Unisex fastening
- French cuff
- It comes with spare white removeable studs. Other coloured removeable studs available to purchase page 40



3





1 DF95S

Original Short Sleeve Chef Tunic

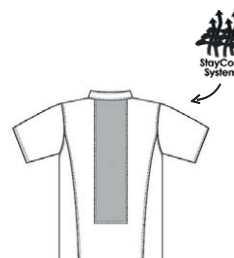
- 50% Cotton, 50% Polyester. 200 gsm
- Wash at 65°C
- Sizes XS to 5XL
- StayCool System
- Bleach resistant
- Stainless steel press studs
- Suitable for embroidery
- Laundry suitable
- Unisex fastening
- Sleeve pen pocket



2 DF129

Asymmetric Chef Jacket

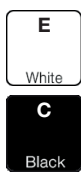
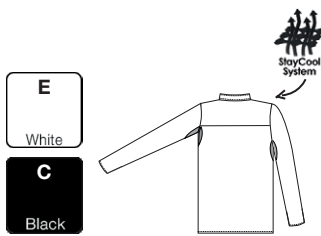
- 65% Polyester, 35% Cotton. 165 gsm
- Sizes XS to 2XL
- Wash at 60°C
- StayCool System
- Open ended zip
- Short sleeve
- Suitable for embroidery
- Do not bleach
- Sleeve pen pocket
- Breast pocket



3 DF112

Cool & Lite Climate Control Jacket

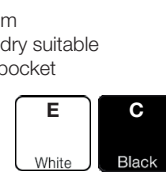
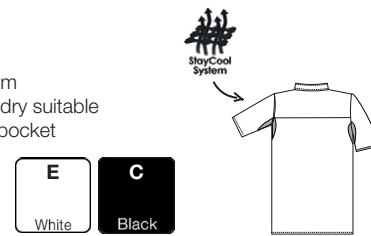
- 65% Polyester, 35% Cotton. 160 gsm
- Wash at 65°C
- Sizes XS to 3XL
- StayCool System
- Bleach resistant
- Stainless steel capped studs
- Suitable for embroidery
- Laundry suitable
- Crease resistant
- Sleeve pen pocket



4 DF112S

Cool & Lite Short Sleeve Jacket

- 65% Polyester, 35% Cotton. 160 gsm
- Wash at 65°C
- Sizes XS to 3XL
- StayCool System
- Bleach resistant
- Stainless steel press studs
- Suitable for embroidery
- Laundry suitable
- Pen pocket



See page 80 for size chart



SLIM FIT AVAILABLE

1

- 35% Cotton
- 200g
- 65°C
- XXS to 4XL
- Bleach Resistant
- Press Stud
- LS Laundry Suitable
- UNISEX FIT

1 DD08AFD

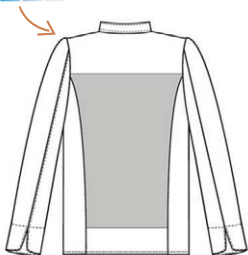
Chef Jacket with Press Studs

- 65% Polyester, 35% Cotton. 200 gsm
- Wash at 65°C
- Sizes XXS to 4XL, including Slim Fit SLS, SLM, SLL
- Short sleeve
- Stainless steel press studs
- Suitable for embroidery
- Laundry suitable
- CoolMax
- Bleach resistant
- Unisex fastening

E **C**
White Black



COOLMAX



2 DD08AFDE-L

Long Sleeve Chef Jacket

- 65% Polyester, 35% Cotton. 200 gsm
- Wash at 65°C
- Sizes XS to 4XL
- Stainless steel press studs
- Suitable for embroidery
- CoolMax
- French cuff
- Unisex fastening
- Bleach resistant

E **C**
White Black

NEW



2



- 35% Cotton
- 200g
- 65°C
- XS to 4XL
- Bleach Resistant
- Press Stud
- LS Laundry Suitable
- UNISEX FIT

3 DD20AFD

Chef Jacket with Removable Studs

- 65% Polyester, 35% Cotton. 200 gsm
- Wash at 65°C
- Sizes XXS to 4XL, including Slim Fit SLS, SLM, SLL
- Short sleeve
- Removable studs
- Suitable for embroidery
- Laundry suitable
- CoolMax
- Unisex fastening
- Bleach resistant

E **C**
White Black



NEW

SLIM FIT AVAILABLE

3



- 35% Cotton
- 200g
- 65°C
- XXS to 4XL
- Bleach Resistant
- Removable Studs
- LS Laundry Suitable
- UNISEX FIT



Premium sateen fabric

NEW

1

- 50% Cotton
- 215g
- XXS to 5XL
- Press Stud
- LS Laundry Suitable
- UNISEX FIT

1 DD01AFD

Chef Jacket with Press Stud

- 50% Cotton, 50% Polyester. 215 gsm
- Sizes XXS to 5XL
- Short sleeve
- Stainless steel press studs
- Suitable for embroidery
- Laundry suitable
- CoolMax
- Pen pocket
- Unisex fastening

COOLMAX



Premium sateen fabric

2

- 50% Cotton
- 215g
- 65°
- XS to 4XL
- Capped Studs
- LS Laundry Suitable
- UNISEX FIT

2 DD43AFD

Chef Tunic with CoolMax

- 50% Cotton, 50% Polyester. 215 gsm
- Wash at 65°C
- Sizes XS to 4XL
- Stainless steel capped studs
- Suitable for embroidery
- Laundry suitable
- CoolMax
- Hidden breast pocket
- Pen pocket

COOLMAX



Premium sateen fabric

NEW

3

- 50% Cotton
- 215g
- XXS to 5XL
- Do Not Bleach
- UNISEX FIT

3 DD04AFD

Chef Jacket with Buttons

- 50% Cotton, 50% Polyester. 215 gsm
- Sizes XXS to 5XL
- Buttons
- Short sleeve
- Suitable for embroidery
- Do not bleach
- CoolMax
- Sleeve pen pocket

COOLMAX



4

4 DR36

Button Strip Elastic

- One Size
- Use with removable stud buttons in DD02/DD20AFD/DE92G



5 DR02

Coloured Stud Buttons

- One Size
- To fit DD02, DD20AFD and DE92G



6 DR18MET

Metallic Chefs Stud Buttons x 12

- One Size
- To fit DD02, DD20AFD and DE92G



JOSEPH ALAN
LONDON



-
-
-
-
-
-



-
-
-
-
-
-



1 DH905L Long Sleeve
DH905S Short Sleeve

- Ladies Shirt**
- 65% Polyester, 35% Cotton. 115 gsm
 - Wash at 40°C
 - Sizes 6-26
 - Bleach resistant
 - Suitable for embroidery
 - Available in 12 colours

2 DH904L Long Sleeves
DH904S Short Sleeves

- Men's Shirt**
- 65% Polyester, 35% Cotton. 115 gsm
 - Wash at 40°C
 - Sizes S to 3XL
 - Bleach resistant
 - Suitable for embroidery
 - Available in 12 colours

JOSEPH ALAN
LONDON



-
-
-
-

-
-
-
-

3 DH901
Men's Check Shirt

- 65% Polyester, 35% Cotton. 115 gsm
- Wash at 40°C
- Sizes S to 3XL
- Regular fit
- Long sleeve
- Suitable for embroidery

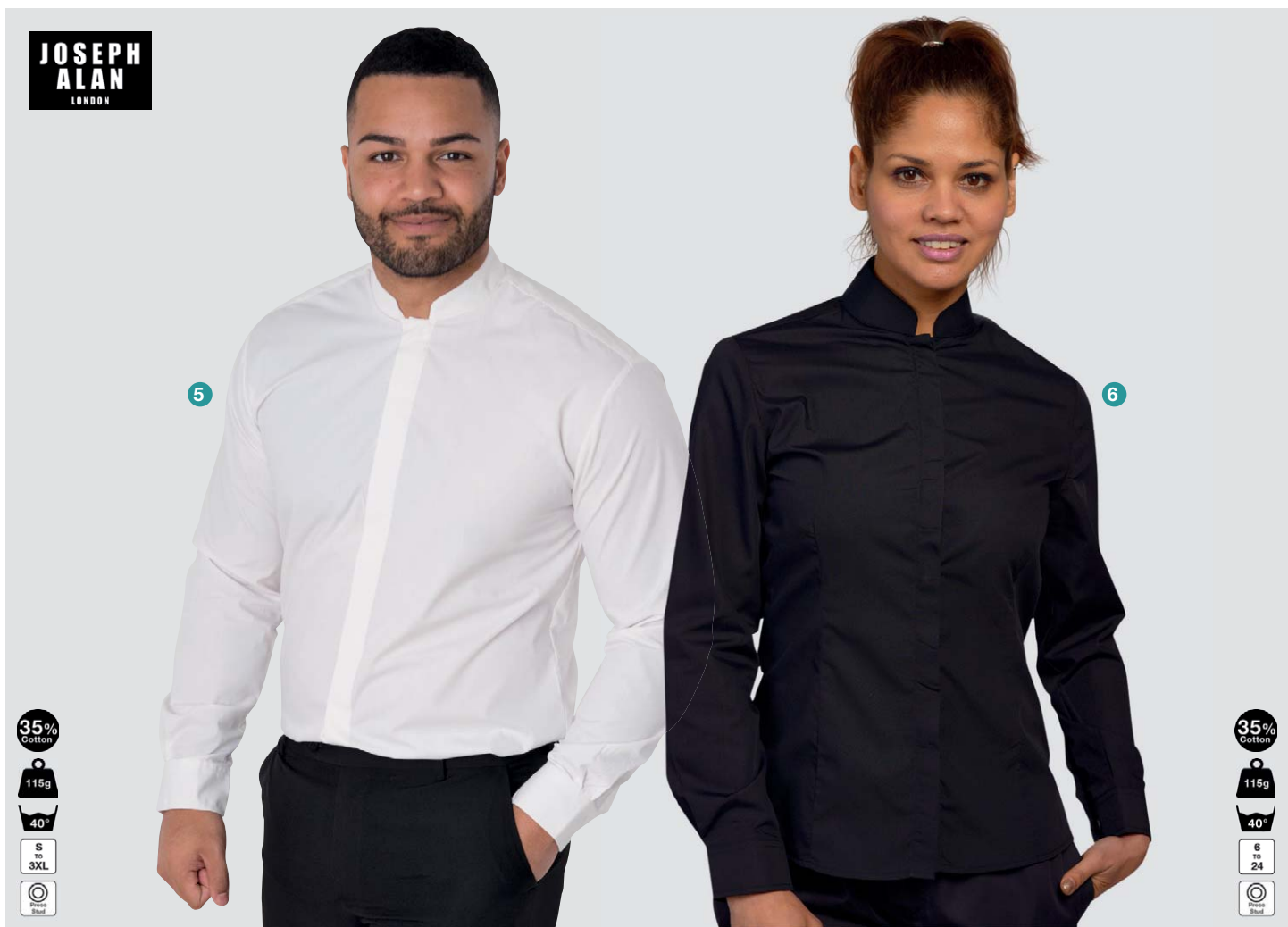


4 DH902
Ladies Check Shirt

- 65% Polyester, 35% Cotton. 115 gsm
- Wash at 40°C
- Sizes 6-20
- Long sleeve
- Suitable for embroidery



See page 80 for size chart



JOSEPH ALAN
LONDON

5

6



5 DH907L

Men's Tunic Shirt

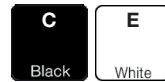
- 65% Polyester, 35% Cotton. 115 gsm
- Wash at 40°C
- Sizes S to 3XL
- Long sleeve
- Suitable for embroidery
- Available in 12 colours



6 DH908L

Ladies Tunic Shirt

- 65% Polyester, 35% Cotton. 115 gsm
- Wash at 40°C
- Sizes 6-24
- Long sleeve
- Suitable for embroidery



JOSEPH ALAN
LONDON

7

8

STRETCH

SLIM FIT



**7 DH200L
DH300L**

Men's Slim Fit Shirt with Stretch

- 55% Cotton, 45% Polyester. 115 gsm
- Wash at 40°C
- Sizes S to 2XL
- Long sleeve
- Crease resistant
- Suitable for embroidery



DH200 and DH205 have a grey inner collar and cuffs.
DH300 and DH305 are all black

**8 DH205L
DH305L**

Ladies Stretch Slim Fit Shirt

- 55% Cotton, 45% Polyester. 115 gsm
- Wash at 40°C
- Sizes 6-18
- Long sleeve
- Crease resistant
- Suitable for embroidery



Dennys
LONDON®

Premium fabric

1



Premium fabric

2

50% Cotton

260g

60°

XS to XL

Crease Resistant

Ladies

50% Cotton

260g

60°

XS to XL

Crease Resistant

Mens

1 DD23F

Ladies Nehru Jacket

- 50% Cotton, 50% Polyester. 260 gsm
- Wash at 60°C
- Sizes XS to XL
- Suitable for embroidery
- Internal pocket
- Crease resistant
- Designed to take DX17/18 metal buttons if wanted

Available In:



2 DD23M

Men's Nehru Jacket

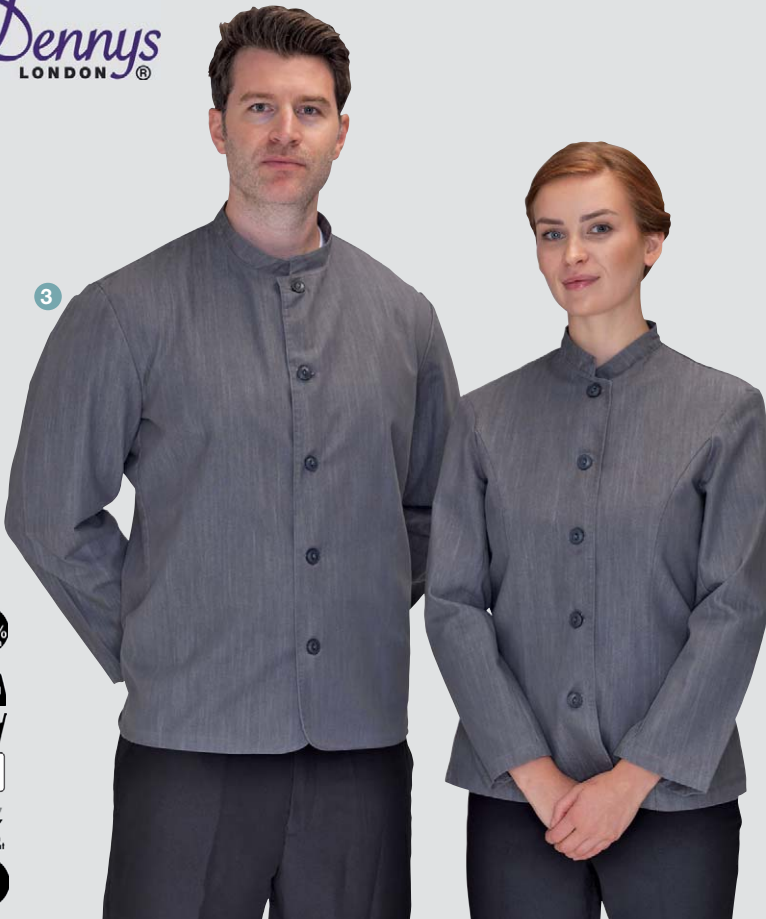
- 50% Cotton, 50% Polyester. 260 gsm
- Wash at 60°C
- Sizes XS to XL
- Suitable for embroidery
- Internal pocket
- Crease resistant
- Designed to take DX17/18 metal buttons if wanted

Available In:



Dennys
LONDON®

3



4

70% Cotton

200g

60°

XS to XL

Bleach Resistant

Mens

70% Cotton

200g

60°

XS to XL

Bleach Resistant

Ladies

3 DD23M/DNM

Cross Dyed Men's Nehru Jacket

- 70% Cotton, 30% Polyester. 200 gsm
- Wash at 60°C
- Sizes XS to XL
- Suitable for embroidery
- Internal pocket
- Bleach resistant
- Designed to take DX17/18 metal buttons if wanted

Available In:



4 DD23F/DNM

Cross Dyed Ladies Nehru Jacket

- 70% Cotton, 30% Polyester. 200 gsm
- Wash at 60°C
- Sizes XS to XL
- Suitable for embroidery
- Internal pocket
- Bleach resistant
- Designed to take DX17/18 metal buttons if wanted

Available In:





Dennys Originals

1 DD75

Originals Stand Collar Jacket

- 100% Cotton. 250 gsm
- Wash at 40°C
- Sizes XXS to XL
- Regular fit
- Do not bleach
- Suitable for embroidery
- 3 patch pocket
- Made to fade

The range has been born from Dennys back catalogue of classic 1930-40s style with a modern fabric influence.

Available In:



2 DD80

Originals Relaxed Jacket

- 100% Cotton. 250 gsm
- Wash at 40°C
- Sizes XXS to XL
- Regular fit
- Do not bleach
- Suitable for embroidery
- Made to fade
- Welt pocket
- 2 patch pocket
- Buttoned cuff
- Centre back vent

Available In:



3 DS50

Originals Utility Waistcoat

- 100% Cotton. 250 gsm
- Wash at 40°C
- Sizes XS to XL
- Regular fit
- Do not bleach
- Suitable for embroidery
- Made to fade
- Self covered buttons
- 3 patch pockets
- Side split
- Back adjuster

Available In:



See page 80 for size chart

Dennys
LONDON



Premium
sateen fabric

1



1 DD15
Classic Cotton Serving Jacket

- 100% Sateen Cotton. 260 gsm
- Wash at 60°C
- Sizes XS to 2XL
- Regular fit
- Suitable for embroidery

Available In:



White

JOSEPH
ALAN
LONDON



2



2 DD72F
Ladies Eton Jacket

- 100% Polyester. 200 gsm
- Wash at 60°C
- Sizes 6 to 18
- Regular fit
- Suitable for embroidery
- With removable chrome buttons

- 2 internal pockets
- Fully lined
- 2 welt pockets

Available In:



Black

JOSEPH
ALAN
LONDON



3



3 DD72M
Men's Eton Jacket

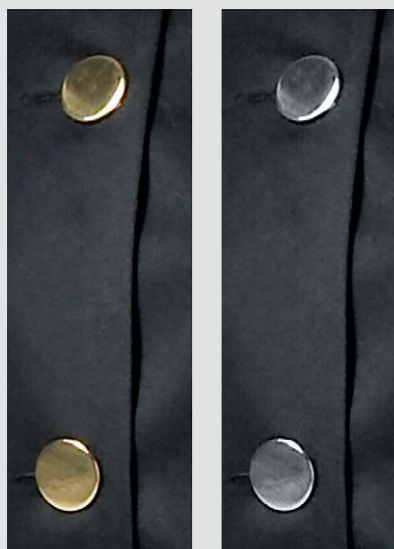
- 100% Polyester. 200 gsm
- Wash at 60°C
- Sizes 36" to 48"
- Regular fit
- Suitable for embroidery
- With removable chrome buttons
- Easy care
- Fully lined
- 2 welt pockets
- 2 internal pockets

Available In:



Black

JOSEPH
ALAN
LONDON



4

DX18

DX17

ONE
SIZE

4 DX17/18
Large Metal Buttons

- One size
- For DD15, DD72 and DD23



Chrome

Gilt

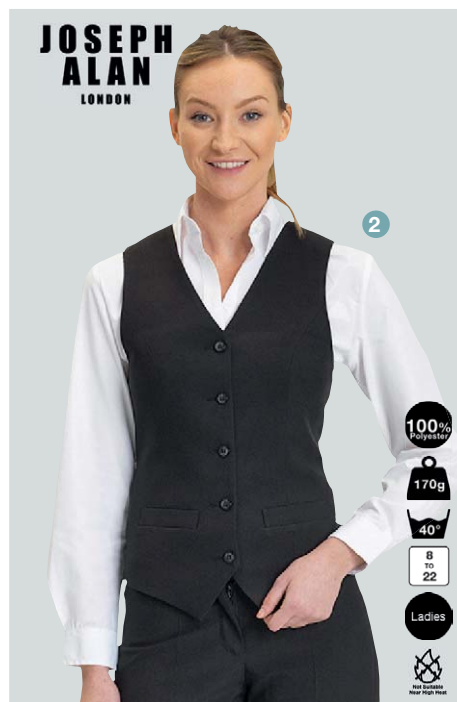
See page 80 for size chart



1 DS07

Men's Waistcoat

- 100% Polyester. 170 gsm
- Wash at 40°C
- Sizes 34" to 50"
- Fully lined
- 4 welt pockets
- Fabric back
- Self back adjuster



2 DS13

Ladies Waistcoat

- 100% Polyester. 170 gsm
- Wash at 40°C
- Sizes 8 to 22
- Fully lined
- 2 welt pockets
- Fabric back
- Self back adjuster



3 DS25

Unisex Waistcoat

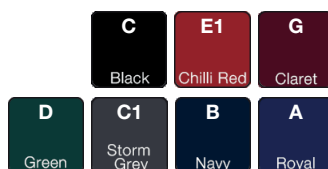
- 100% Recycled Polyester. 195 gsm
- Wash at 60°C
- Sizes XS to 2XL
- Fully lined
- 2 welt pockets
- Fabric back
- Self back adjuster



4 DS27

Unisex Self Button Waistcoat

- 100% Recycled Polyester. 195 gsm
- Wash at 40°C
- Sizes XS to 2XL
- Removable buttons
- Fully lined
- Self back
- 2 welt pockets
- Self back adjuster



5 DX17B/18B

Small Metal Buttons for Waistcoats

- One size



Dennys
LONDON®



1

1 DB34

Men's Black Washable Trousers

- 100% Polyester. 195 gsm
- Wash at 60°C
- Sizes 26" to 50"
- Available in short 30", regular 32", un hemmed 38"
- 2 slanted side pockets
- Key loop at waist
- Belt loops
- 2 back buttoned jet pocket
- Trouser crease
- Easy care

Available In:

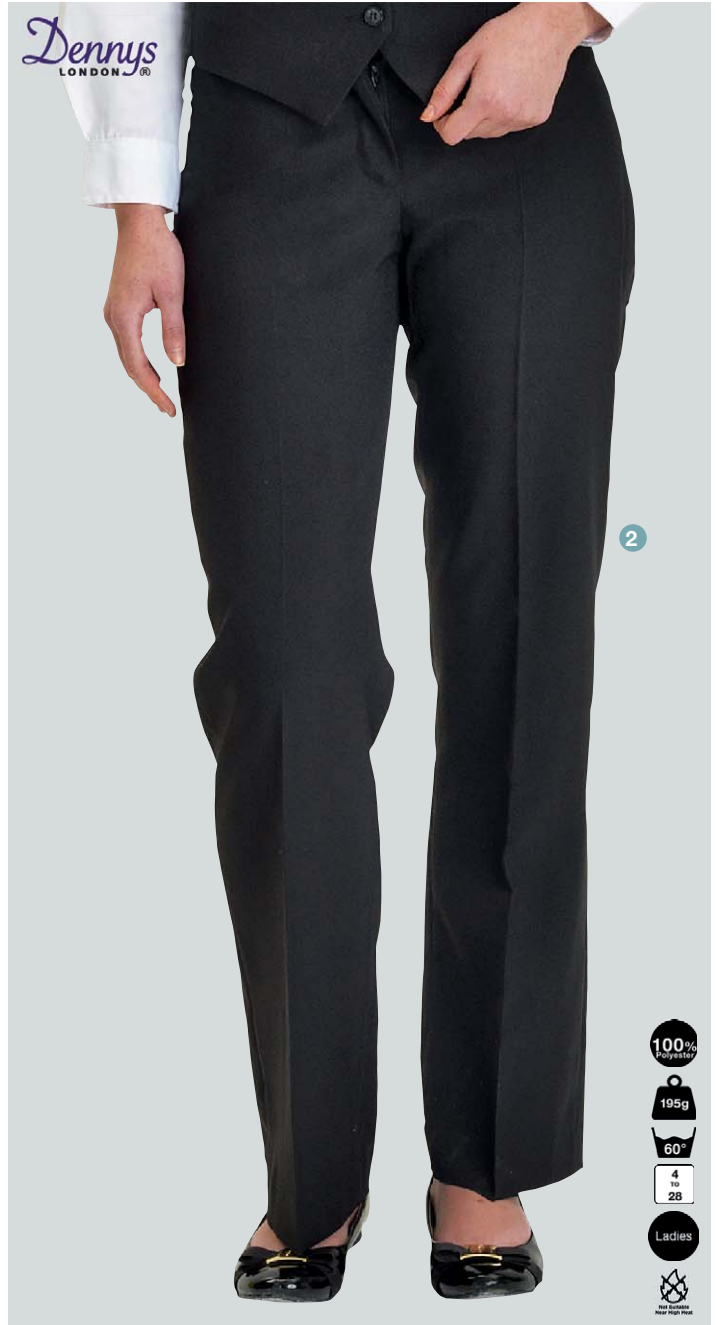


2 DB35

Ladies Black Washable Trousers

- 100% Polyester. 195 gsm
- Wash at 60°C
- Sizes 4 to 28
- Available in regular 31", un hemmed 34"
- Wide waistband
- Key loop at waist
- 2 front pockets
- 2 back welt pockets
- Easy care
- Trouser crease

Available In:



2



Dennys
LONDON®



3

3 DB36

Ladies Black Washable Skirt

- 100% Polyester. 195 gsm
- Wash at 60°C
- Sizes 4 to 26
- Available in regular and short
- Back length 22 inches
- Fully lined
- Centre back vent
- Key loop
- Concealed zip and internal button
- Easy care

Available In:



Dennys
LONDON®



1

NEW

35% Cotton

160g

65°

8 to 14

Bleach Resistant

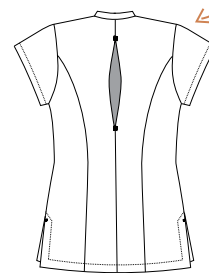
Ladies

1 DA85

Polycotton Therapy Tunic with CoolMax back

- 65% Polyester, 35% Cotton. 160 gsm
- Wash at 65°C
- Bleach resistant
- Sizes 8 to 14
- Suitable for embroidery
- CoolMax action back
- Concealed zip
- Ladies fit

COOLMAX



See page 58 for Ladies polycotton stretch trousers - DC25AFD

Matching trousers page 47

2 DA75

Helena Therapy Tunic with Zipped Asymmetric Design

- 100% Recycled Polyester. 195 gsm
- Wash at 60°C
- Sizes 6 to 20
- Regular fit
- Bleach resistant
- Soil release
- Suitable for embroidery
- Crease resistant
- Action back
- Hidden zip
- Side splits

Available In:

C Black	Q1 Berry	Q Griffin Grey	A1 Hot Pink
L1 Mid Blue	B Navy	F Red	E White

Dennys
LONDON®



2

100% Polyester

195g

60°

6 to 20

Bleach Resistant

Soil Release

Crease Resistant

Ladies

100% Recycled Polyester

Dennys
LONDON®



3

100% Polyester

195g

60°

XS to 2XL

Bleach Resistant

Soil Release

Crease Resistant

UNISEX FIT

100% Recycled Polyester

3 DA76

Jude Therapy Tunic with Over the Head Design

- 100% Recycled Polyester. 195 gsm
- Wash at 60°C
- Sizes XS to 2XL
- Regular fit
- Bleach resistant
- Soil release
- Suitable for embroidery
- Crease resistant
- Action back
- Breast pocket

Available In:



Matching trousers

DB37 - page 47

DC62 - page 53

DC90AFD Stretch trousers - page 58

See page 80 for size chart



1

1 DP94

Polycotton Tabard with Pocket

- 65% Polyester, 35% Cotton. 245 gsm
- Wash at 65°C
- Sizes S to 3XL
- Regular fit
- Bleach resistant
- Stainless steel press studs
- Suitable for embroidery
- Laundry suitable
- Adjustable side tab
- Bound edges

Available In:

C Black	Q Griffin Grey	B Navy	D Bottle Green
E White	G Claret	H Ivory	L Peat

- 35% Cotton
- 245g
- 65°
- S to 3XL
- Bleach Resistant
- Press Stud
- LS Laundry Suitable
- UNISEX FIT

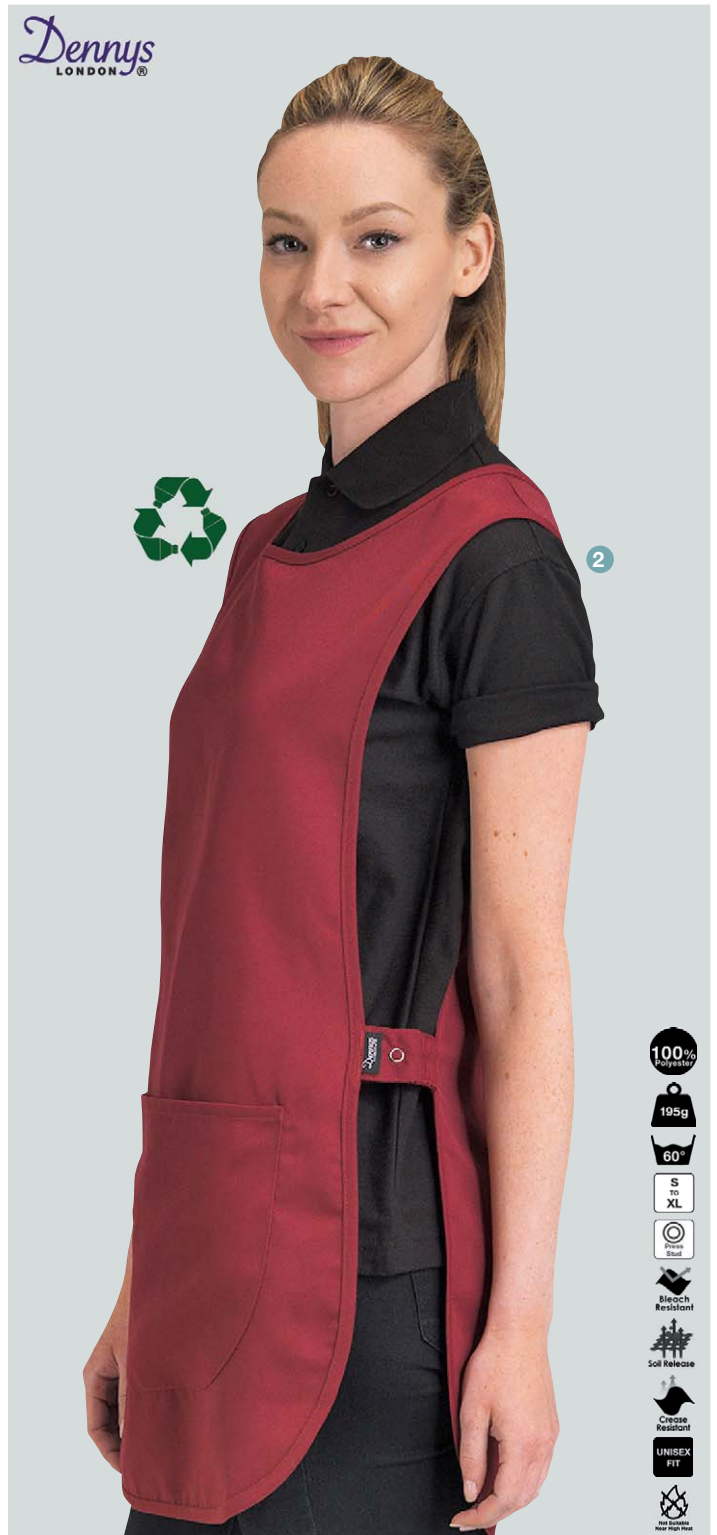
2 DP97

Recycled Polyester Tabard with Pocket

- 100% Recycled Polyester. 195 gsm
- Wash at 60°C
- Sizes S to XL
- Regular fit
- Bleach resistant
- Soil release
- Suitable for embroidery
- Crease resistant
- Elastic side tab
- Large front pocket
- Stainless steel press studs
- Bound edges

Available In:

C Black	Q1 Berry	D Bottle Green	G Claret	Q Griffin Grey	A1 Hot Pink
B Navy	W Olive	N Postman	F Red	K1 Sea Grass	E White



2

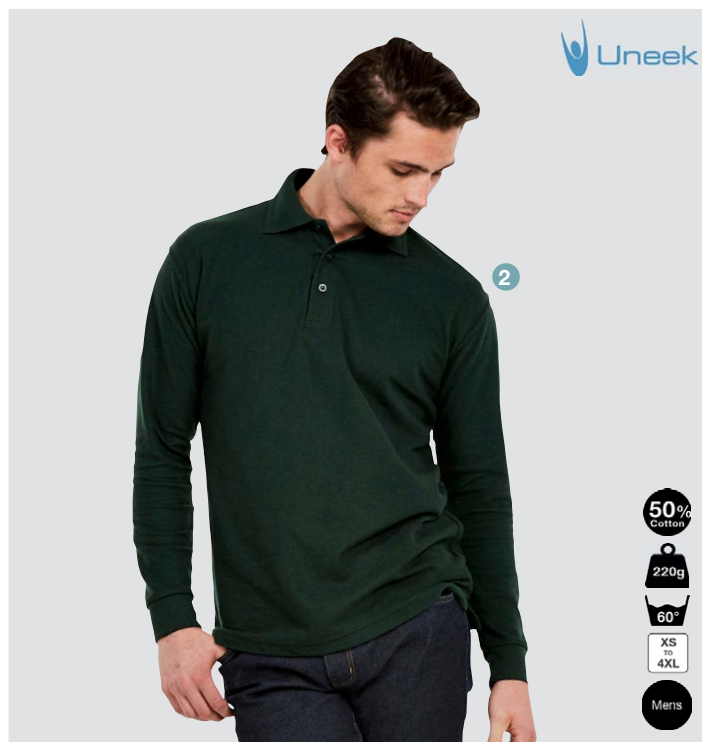
- 100% Polyester
- 195g
- 60°
- S to XL
- Press Stud
- Bleach Resistant
- Soil Release
- Crease Resistant
- UNISEX FIT
- Recycled Polyester



1 DH17

Unisex Polo Shirt

- 100% Polyester. 200 gsm
- Wash at 60°C
- Sizes S to 3XL
- Suitable for embroidery
- Stainless steel press studs
- Hemmed sleeves and bottom
- Taped neck



2 UC113

Long Sleeve Polo Shirt

- 50% Cotton, 50% Polyester. 220 gsm
- Wash at 60°C
- Sizes XS to 4XL
- Suitable for embroidery
- Self cuff
- Side vent and extended back
- Taped neck
- Raised collar trim
- 3 button placket



3 UC301

Classic Cotton T-Shirt

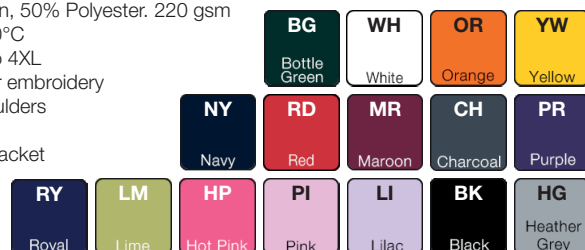
- 100% Cotton. 180 gsm
- Wash at 40°C
- Sizes XS to 6XL
- Suitable for embroidery
- Taped shoulder



4 UC106

Ladies Polo Shirt

- 50% Cotton, 50% Polyester. 220 gsm
- Wash at 60°C
- Sizes XS to 4XL
- Suitable for embroidery
- Taped shoulders
- Side vents
- 3 button placket





1 DH02

Classic Polo Shirt

- 50% Cotton, 50% Polyester. 220 gsm
- Wash at 60°C
- Sizes XS to 4XL
- Suitable for embroidery
- Taped neck
- 3 button placket

G Royal	D Sky Blue	Q Hot Pink
K Navy	E Maroon	P Orange
N Charcoal	H Bottle Green	C Heather Grey
B Black	L Kelly Green	F Yellow
		A White

2 DH36

Premium Polo Shirt

- 50% Cotton, 50% Polyester. 250 gsm
- Wash at 60°C
- Sizes XS to 4XL
- Suitable for embroidery
- Knitted raised collar and cuff
- Taped side vents and neck
- Extended back
- 3 button placket

D Grey	G White	J Maroon
A Navy	E Red	C Bottle Green
H Black	F Yellow	B Royal
		K Sky Blue



JOSEPH ALAN
LONDON

Call Joseph Alan on 020 7536 9411 to discuss bespoke uniforms



1 DC60C

Low Cost Chef Black Trousers

- 65% Polyester, 35% Cotton. 200 gsm
- Wash at 40°C
- Sizes XXS to 4XL
- Regular fit
- Suitable for embroidery
- Low cost
- Internal drawstring waist
- Back patch pocket



2 DC20

Elasticated Waist Trousers without Pockets

- 65% Polyester, 35% Cotton. 195 gsm
- Wash at 65°C
- Sizes XS to 4XL
- Suitable for embroidery
- Laundry suitable
- Bleach resistant
- Internal drawstring
- Long length available



3 DC15

Low Cost Trousers

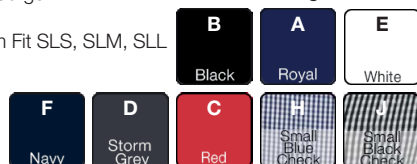
- 65% Polyester, 35% Cotton. 180 gsm
- Wash at 40°C
- Sizes XXS to 4XL
- Suitable for embroidery
- Low cost
- Back patch pocket
- Long length available
- Internal drawstring



4 DC18

Unisex Elasticated Chefs Trousers

- 65% Polyester, 35% Cotton. 195 gsm
- Wash at 65°C
- Sizes XXS to 4XL, including Slim Fit SLS, SLM, SLL
- Suitable for embroidery
- Laundry suitable
- Best seller
- Side seam pockets
- Bleach resistant
- Back patch pocket
- Internal drawstring





1 DC28

Chef Check Trousers

- 65% Polyester, 35% Cotton. 195 gsm
- Wash at 65°C
- Sizes XXS to 4XL (Black Check), XS to 2XL (Stripe)
- Regular fit
- Suitable for embroidery
- Side pockets
- Back patch pocket
- Internal drawstring



3 DC68

Originals Relaxed Trousers with Cuff

- 100% Cotton. 250 gsm
- Wash at 40°C
- Sizes XS to XL
- Ankle cuff
- Do not bleach
- Suitable for embroidery
- Made to fade
- Side seam pocket
- Back patch pocket



2 DC62

Fully Elasticated Long Life Chef Trousers

- 100% Polyester. 200 gsm
- Wash at 65°C
- Sizes XS to 2XL
- Regular fit
- Soil release
- Suitable for embroidery
- Laundry suitable
- Bleach resistant
- Side seam pocket
- Back patch pocket
- Internal drawstring



4 DC65

Originals Dungarees

- 100% Cotton. 250 gsm
- Wash at 40°C
- Sizes XXS to XL
- Do not bleach
- Suitable for embroidery
- Made to fade
- Side front pocket
- Bib pocket
- Back patch pockets
- Adjustable straps



See page 80 for size chart



- 35% Cotton
- 200g
- 65°
- XS to 2XL
- Bleach Resistant
- LS Laundry Suitable
- UNISEX FIT



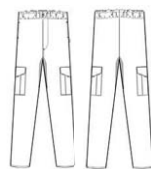
- 35% Cotton
- 160g
- 65°
- XS to 3XL
- Bleach Resistant
- LS Laundry Suitable
- Crease Resistant
- UNISEX FIT

Our lightest trouser

1 DE25

Combat Trousers

- 65% Polyester, 35% Cotton. 200 gsm
- Wash at 65°C
- Sizes XS to 2XL
- Regular fit
- Bleach resistant
- StayCool System
- Suitable for embroidery
- Laundry suitable
- Locking drawstring toggle
- Side seam pockets
- 2 buttoned large leg pockets
- 1 back patch pocket
- Functional zip



B
Black

2 DE98

Cool & Lite Trousers

- 65% Polyester, 35% Cotton. 160 gsm
- Wash at 65°C
- Sizes XS to 3XL
- Regular fit
- Bleach resistant
- StayCool System
- Suitable for embroidery
- Laundry suitable
- Crease resistant
- Locking drawstring toggle
- 2 side pockets
- 1 back patch pocket
- 1 phone pocket



B
Black



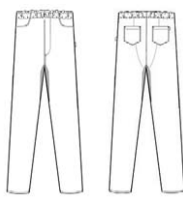
SLIM FIT AVAILABLE

- 35% Cotton
- 200g
- 65°
- XS to 2XL
- Bleach Resistant
- LS Laundry Suitable
- UNISEX FIT

1 DF22

Prep Chino Trousers

- 65% Polyester, 35% Cotton. 200 gsm
- Wash at 65°C
- Sizes XS to 2XL, including Slim Fit SLS, SLM, SLL
- Bleach resistant
- StayCool System
- Suitable for embroidery
- Laundry suitable
- Contrast stitching
- 2 front pockets
- 2 back patch pockets
- Locking drawstring toggle
- Functional zip



CB
Khaki Black



SLIM FIT AVAILABLE

- 70% Cotton
- 200g
- 65°
- XS to 2XL
- Bleach Resistant
- LS Laundry Suitable
- Crease Resistant
- UNISEX FIT

2 DF22A

Prep Denim Chino Trousers

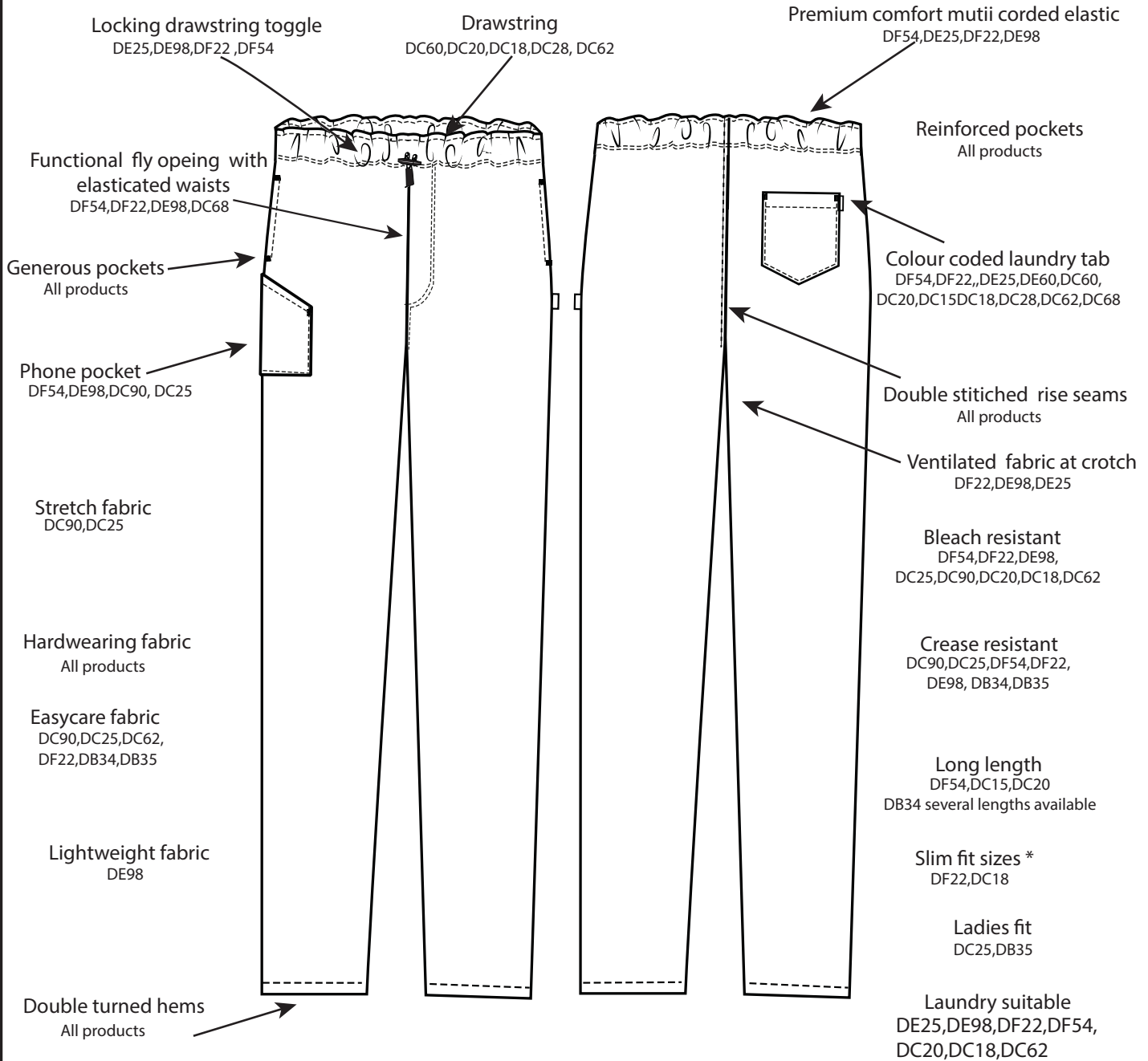
- 70% Cotton, 30% Polyester. 200 gsm
- Wash at 65°C
- Sizes XS to 2XL, including Slim Fit SLS, SLM, SLL
- Slim fit
- Bleach resistant
- StayCool System
- Suitable for embroidery
- Laundry suitable
- Crease resistant
- Locking drawstring toggle
- Functional zip
- 2 front pockets and 2 patch pockets



Black

See page 80 for size chart

OUR TROUSERS WE MAKE THE ORDINARY - EXTRAORDINARY



Fabric weight

- 250gms DC68
- 215gms DF22B
- 200gms DF54,DF22,DE25,DC60
- 195gms DC28,DC62,DC20,DC18,DB34,DB35
- 180gms DC15
- 165gms DC68

* Slim fit sizes are additional sizes in between S,M & L

1 DF54

Professional Trousers

- 65% Polyester, 35% Cotton. 200 gsm
- Wash at 65°C
- Sizes XXS to 5XL
- Bleach resistant
- Suitable for embroidery
- Laundry suitable
- Best seller
- External drawstring
- Side seam pockets
- Phone pocket
- 1 back patch pocket

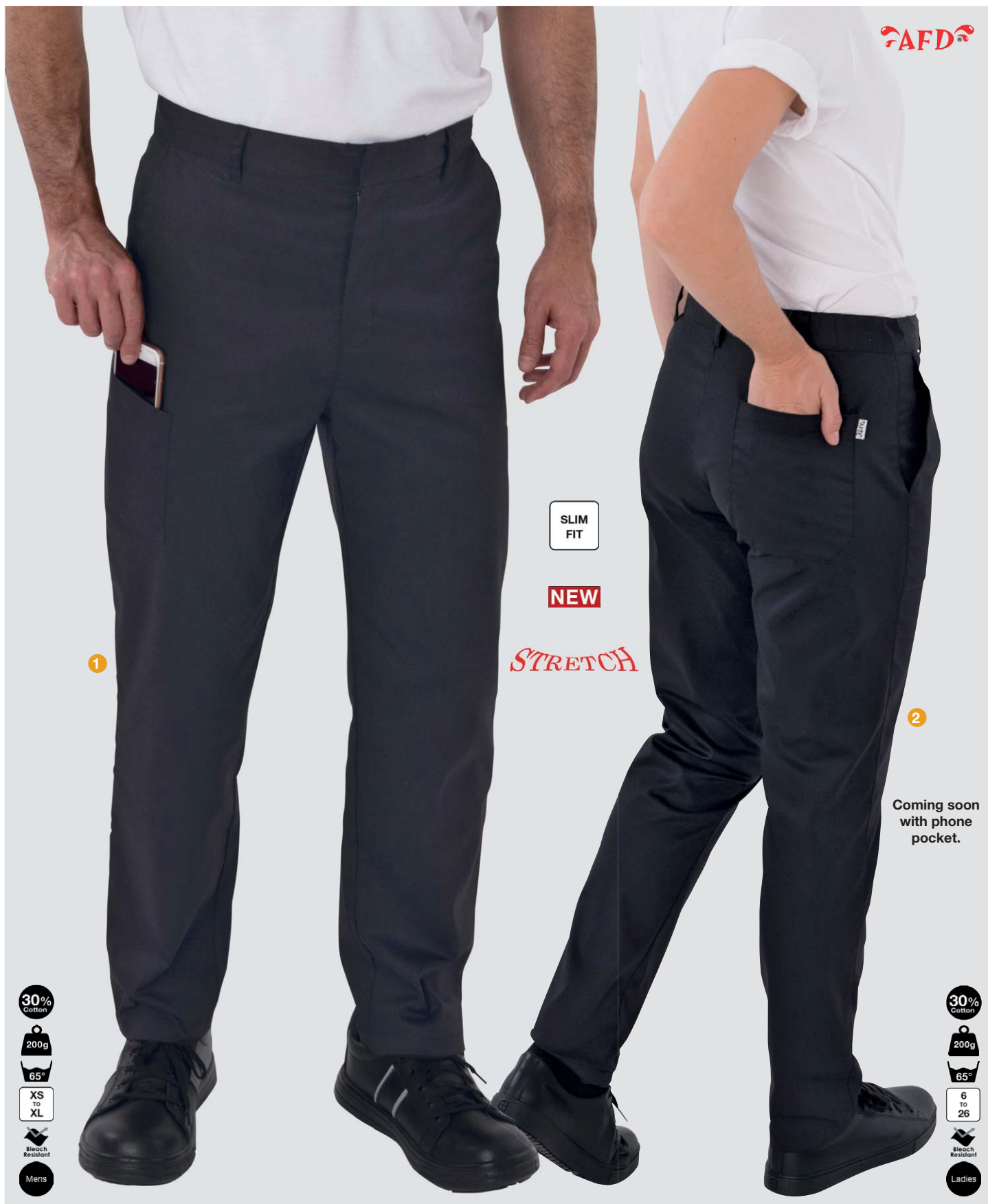
BEST SELLER

35% Cotton	200g	65°	XXS TO 5XL	Bleach Resistant	LS Laundry Suitable	UNISEX FIT
		E White				
C Black	T Griffin Grey					



Phone pocket showing on the front of the trouser.





SLIM
FIT

NEW

STRETCH

1

2

Coming soon
with phone
pocket.

30%
Cotton

200g

65°

XS
to
XL

Bleach
Resistant

Mens

30%
Cotton

200g

65°

6
to
26

Bleach
Resistant

Ladies

1 DC90AFD

Men's Stretch trousers

- 67% Polyester, 30% Cotton, 3% Lycra. 200 gsm
- Wash at 65°C
- Sizes XS to XL
- Front slanted pockets
- 1 pocket on the leg
- 1 back patch pocket
- Suitable for embroidery

- Bleach resistant
- Belt loops
- Fly front
- Phone pocket
- Easy care fabric

2 DC25AFD

Ladies Stretch trousers

- 67% Polyester, 30% Cotton, 3% Lycra. 200 gsm
- Wash at 65°C
- Sizes 6 to 26
- Front slanted pockets and one back patch pocket
- Suitable for embroidery
- Bleach resistant

- Belt loops
- Fly front
- Easy care fabric

Black

Black



Dennys LONDON®

35% Cotton 200g
60°
LS Laundry Suitable
UNISEX FIT

BEST SELLER

J Purple
B Navy

C1 Storm Grey
C Black

A Royal
D Bottle Green

E White
F Red

L Peat
Q Griffin Grey
G Claret

1 DG07
Technicolour Skull Cap

- 65% Polyester, 35% Cotton. 200 gsm
- Wash at 60°C
- Sizes S to XL
- Suitable for embroidery
- 5 eyelets
- Laundry suitable



Dennys LONDON®

70% Cotton 200g
60°
LS Laundry Suitable
UNISEX FIT

2 DG90DNM
Denim Skull Cap

- 70% Cotton, 30% Polyester. 200 gsm
- Wash at 60°C
- Sizes M to L
- Suitable for embroidery
- 5 eyelets
- Laundry suitable
- Elastic section

B Indigo

C Light Blue
A Black Denim
D Grey



Dennys LONDON®

LOW COST

35% Cotton 170g
40°
LS Laundry Suitable
UNISEX FIT

3 DG91
Low Cost Skull Cap - No Eyelets

- 65% Polyester, 35% Cotton. 170 gsm
- Wash at 40°C
- Sizes M to L
- Suitable for embroidery
- Low cost
- Elastic section

C Black
E White



Dennys LONDON®

35% Cotton 200g
65°
LS Laundry Suitable
UNISEX FIT

4 DG23
Printed Skull Cap

- 65% Polyester, 35% Cotton. 200 gsm
- Wash at 65°C
- Sizes M to L
- Suitable for embroidery
- 5 eyelets
- Elasticated section

ST Black Plaid

E Black Check



LeChef™

100% Polyester 170g
65°
LS Laundry Suitable
UNISEX FIT

5 DF14
StayCool Skull Cap

- 100% Polyester. 170 gsm
- Wash at 65°C
- Sizes M to L
- StayCool System
- Suitable for embroidery
- Laundry suitable
- Elastic and velcro

C Black
E White



LeChef™

50% Cotton 200g
65°
LS Laundry Suitable
UNISEX FIT

6 DF15
Adjustable Skull Cap

- 50% Cotton, 50% Polyester. 200 gsm
- Wash at 65°C
- Sizes M to L
- StayCool System
- Suitable for embroidery
- Laundry suitable
- Elastic and velcro

C Black
E White



LeChef™

35% Cotton 200g
65°
LS Laundry Suitable
UNISEX FIT

7 DF37
Elasticated Skull Cap

- 65% Polyester, 35% Cotton. 200 gsm
- Wash at 65°C
- Sizes M to L
- Suitable for embroidery
- Laundry suitable
- 5 eyelets
- Elasticated section

E Griffin Grey

F Black
G White



LeChef™

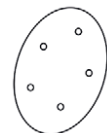
35% Cotton 200g
65°
LS Laundry Suitable
UNISEX FIT

8 DF37C
Elasticated Cap with StayCool Crown

- 65% Polyester, 35% Cotton. 200 gsm
- Wash at 65°C
- Sizes M to L
- StayCool System
- Suitable for embroidery
- Laundry suitable
- Elasticated section

F Black
G White

Why choose a Dennys skull cap?



We pride ourselves that most of our caps have several features that make your working life that little bit more comfortable:

- We have designed our caps to be oval shaped to provide a better fit for comfort
 - Our caps either feature air holes or use our breathable StayCool fabric to help keep your head cool in the heat of the kitchen
- Additional features which can be found through various Dennys Brands skull caps include elasticated back, single band and turn up double band. Browse our selection to find what you require!



1 DG132
Adjustable Stretch Flat Cap
 - 67% Polyester, 30% Cotton. 3% Lycra
 - Sizes S to M - M to L
 - Stainless steel capped studs



2 DG120C
Adjustable Beanie Hat with Cuff
 - 100% recycled polyester. 195 gms
 - Adjustable velcro fastening
 - One size adjustable velcro to S to XL
 - 4 Ventilation eyelets
 - Suitable for embroidery



3 DG29
Zandana Cap Range
 - 100% Cotton. 150 gsm
 - Wash at 65°C
 - One size
 - Suitable for embroidery
 - Laundry suitable



4 DF02
Printed Flat Cap
 - 65% Polyester, 35% Cotton. 200 gsm
 - Wash at 40°C
 - Sizes S to XL



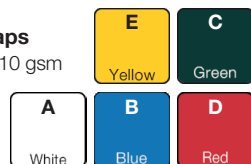
5 DG29AFD
Bandana Range with CoolMax Panels
 - 100% Cotton. 150 gsm
 - Wash at 65°C
 - One size
 - Suitable for embroidery
 - Laundry suitable
 - CoolMax



6 DG70
Disposable Hair Nets
 - 100% Nylon
 - One size



7 DG15
Mob Pack of 100 Caps
 - 100% Polypropylene. 10 gsm
 - One size





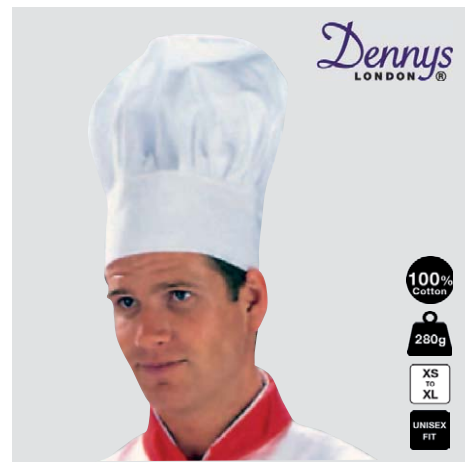
1 DG99
Trilby Hat Bands
 - 100% Polyester
 - Sizes S to XL

A
Red
B
C
D
Navy
Green
Black



2 DG39
Unisex Trilby Hat
 - 100% Nylon
 - Hand wash
 - Sizes S to XL

C
E
Black
White



3 DG02E
The Original Chefs Hat
 - 100% Cotton. 280 gsm
 - Sizes XS to XL
 - Suitable for embroidery

White



4 DG401
White Peaked Cap
 - 100% Polyester
 - Wash at 30°C
 - One size
 - Regular fit

White



5 DG402
Peaked Food Cap with Snood
 - 65% Polyester, 35% Cotton
 - Wash at 30°C
 - One size

White



6 DG400
Lightweight Unisex Cap
 - 100% Polyester
 - Wash at 30°C
 - One size
 - Regular fit

White



7 RC24
Ventilated Baseball Cap
 - 100% Cotton. 350gsm
 - Hand wash
 - One size
 - Regular fit
 - Suitable for embroidery

FOR
BLK
Forest Green
Black
WHI
RED
NVY
White
Red
Navy



8 RC47
Ventilated Mesh Baseball Cap
 - 100% Cotton
 - One size
 - Suitable for embroidery

NVY
BLK
Navy
Black
WHI
ROY
RED
White
Royal
Red



9 DG05
Pleated Chefs Hat
 - Paper
 - One size

White



100% Polyester
40°
ONE SIZE
UNISEX FIT

1 PR765

Coloured Ties

- 100% Polyester
- Wash at 40°C
- One Size



100% Polyester
40°
ONE SIZE
SKINNY TIE
UNISEX FIT

2 PR793

Slim Coloured Ties

- 100% Polyester
- Wash at 40°C
- One Size



100% Polyester
ONE SIZE
UNISEX FIT

3 DL10

Black Bow Tie on Self-Material Band

- 100% Polyester
- One Size



100% Polyester
40°
ONE SIZE
UNISEX FIT

4 DL11

Low Cost Black Tie

- 100% Polyester
- Wash at 40°C
- One Size



100% Polyester
40°
ONE SIZE
UNISEX FIT

5 DL08

Bow Ties

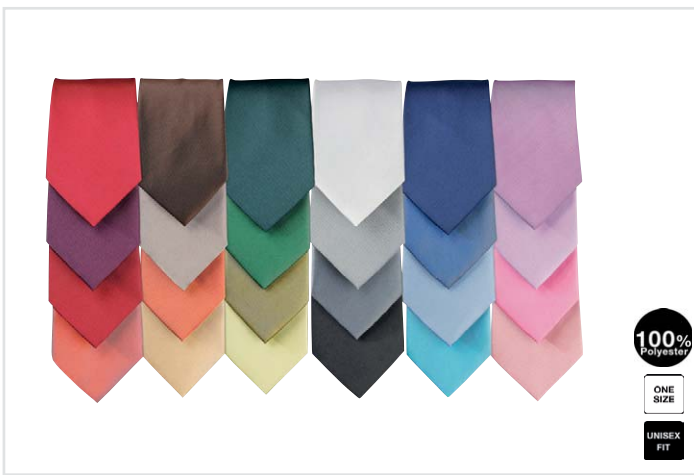
- 100% Polyester
- Wash at 40°C
- Adjustable



6 DT25

Nickel Armbands

- Nickel
- One Size



1 PR785
Coloured Clip-On Ties

- 100% Polyester
- One Size



2 DL46
Low Cost Coloured Clip on Tie

- 100% Polyester
- Wash at 40°C
- One Size



3 WP-TIES
Horizontal Ribbed Ties

- 100% Polyester
- One Size



4 DL01
Head and Neckties

- 100% Cotton. 120 gsm
- Wash at 40°C
- Sizes 102cm (40") x 69cm (27") x 69cm (27")



5 DL02 Various Prints

- Headscarf and Necktie**
- 100% Cotton. 150gsm
 - Sizes W 105cm (41") x L 48cm (19")





Dennys
LONDON®

ONE
SIZE

1 DG01
Double Ended Oven Gloves

- Length 91cm (36")
- Mixed fibres
- One size



Dennys
LONDON®

100%
Cotton

ONE
SIZE

2 DW34
Hot Glove Up To 250°C

- 100% Cotton
- One size



Dennys
LONDON®

100%
Cotton

M
TO
XL

3 DW35A
Elastic Cuff Cotton Gloves (Pack of 12)

- 100% Cotton
- Sizes M to XL



Dennys
LONDON®

100%
Cotton

M
TO
L

4 DW36
Black or White Heat Resistant Gloves (1 pair)

- 100% Cotton
- Sizes M to L



Dennys
LONDON®

HEAT
RESISTANT

100%
Cotton

5 DW29
Terry Gauntlet Oven Glove

- 100% Cotton
- Heat resistant to 250°C
- 35cm (14")
- Suitable for embroidery



Dennys
LONDON®

100%
PVC

S
TO
XL

6 DW79
Vinyl Disposable Gloves (Pack of 100)

- 100% PVC
- Sizes S to XL



See page 80 for size chart



1 DA05S

Men's Kitchen Porter Boiler Suit

- 65% Polyester, 35% Cotton. 195 gsm
- Wash at 40°C
- Sizes S to 2XL
- Short sleeve
- Suitable for embroidery



2 DA23

Ladies Lab Coat

- 65% Polyester, 35% Cotton. 245 gsm
- Wash at 65°C
- Sizes XS to 2XL
- Length 42"
- Laundry suitable
- Suitable for embroidery

3 DA22

Men's Lab Coat

- 65% Polyester, 35% Cotton. 245 gsm
- Wash at 65°C
- Sizes S to 3XL
- Length 40"
- Laundry suitable
- Suitable for embroidery



4 DZ920

Scrub Suit Set in Ciel Blue

- 65% polyester, 35% cotton. 145 gsm
- Sizes XS-4XL
- Wash at 65°C
- Unisex
- Reversible
- Pocket on each side
- Bleach resistant





1 DW05
Heavy Duty Oven Cloth (Packs of 10)
 - 100% Cotton
 - W 52cm (20") x L 80cm (31")
 - Suitable for embroidery

W: 52cm
 L: 80cm
 100% Cotton
 Natural



2 DW11
Multi Use Kitchen Cloth (Packs of 10)
 - 100% Cotton. 125gsm
 - W 46cm (18") x L 100cm (39")
 - Suitable for embroidery

125g
 W: 46cm
 L: 100cm
 100% Cotton
 Florida Blue



3 DW33
Oven Cloth Herringbone Weave (Packs of 10)
 - 100% Cotton
 - W 52cm (20") x L 80cm (31")
 - Suitable for embroidery

W: 52cm
 L: 80cm
 100% Cotton
 Cream



4 DW31
Blue Herringbone Kitchen Cloth (Packs of 10)
 - 100% Cotton. 88gsm
 - W 51cm (20") x L 76cm (30")
 - Suitable for embroidery

88g
 W: 51cm
 L: 76cm
 100% Cotton
 White and Blue Stripe



5 DW96
Single Thickness Serving Cloth
 - 50% Cotton, 50% Polyester 220gsm
 - W 58cm (23") x L 38cm (15")
 - Suitable for embroidery

220g
 W: 58cm
 L: 38cm
 50% Cotton

6 DW96-DBL
Double Thickness Polycotton Serving Cloth (Black only)
 - 50% Cotton, 50% Polyester 220gsm
 - W 58cm (23") x L 58cm (23")
 - Suitable for embroidery

C Black
 E White
 50% Cotton



7 DG01
Double Ended Oven Gloves
 - Length 91cm (36")
 - Mixed fibres
 - One size

ONE SIZE
 Off White

Dennys
LONDON®



W: 71cm
L: 46cm

100%
Cotton

1 DW01

Waiter's Cloth (Packs of 10)

- 100% Cotton
- W 71cm (28") x L 46cm (18")
- Suitable for embroidery



Dennys
LONDON®



W: 46cm
L: 71cm

100%
Cotton

2 DW08

Tea Towel (Packs of 10)

- 100% Cotton
- W 46cm (18") x L 71cm (28")
- Suitable for embroidery



Dennys
LONDON®



W: 46cm
L: 71cm

100%
Cotton

3 DW74

Check Terry Towelling Tea Towel (Packs of 10)

- 100% Cotton
- W 46cm (18") x L 71cm (28")
- Suitable for embroidery



Dennys
LONDON®



W: 81cm
L: 56cm

100%
Cotton

4 DW10

White Honeycomb Cotton Towel (Packs of 10)

- 100% Cotton
- W 81cm (32") x L 56cm (22")
- Suitable for embroidery



Dennys
LONDON®



W: 66cm
L: 66cm

100%
Cotton

5 DW98

Champagne Cloth (Single Units)

- 100% Cotton
- W 66cm (26") x L 66cm (26")
- Suitable for embroidery



Dennys
LONDON®



W: 76cm
L: 61cm

60%
Linen

40%
Cotton

6 DW02

Glass Cloth with Coloured Border (Single Units)

- 60% Linen, 40% Cotton
- W 76cm (30") x L 51cm (20")
- Suitable for embroidery





1 DZ450
Cotton Face Mask – Pack 5

- 100% Cotton
- Single layer
- Plain black
- Non-medical mask
- Machine washable
- Nose clip
- Elasticated ear loops
- Unisex



2 DZ490
Melt-Blown Filters – Pack 50

- To be used with DZ470 and DZ460
- Provides inner layer for extra protection
- One time use
- Disposable



3 DZ460
Cotton Face Mask

- 100% Cotton outer with bamboo fibre inner
- 2 layer
- Adjustable ear loops
- Can be embroidered
- Non-medical device
- Machine wash
- Opening to allow for disposable filters
- Available in a range of colours



4 DZ400/50
Disposable FFP1 Face masks

- 3 ply disposable surgical face masks
- Pack of 50
- Made from melt blown fabric, and non-woven fabric



5 DZ470Q
Linen Face Mask - Black

- 100% Linen outer with a bamboo fibre inner
- Reusable linen face mask
- 2 layer
- Adjustable ear loops
- Can be embroidered
- Non-medical device
- Machine wash
- Opening to allow for disposable filter
- Available in a range of colours



6 DZ470E
Linen Face Mask - Grey Stripe

- 100% Linen outer with a bamboo fibre inner
- Reusable linen face mask
- 2 layer
- Adjustable ear loops
- Can be embroidered
- Non-medical device
- Machine wash
- Opening to allow for disposable filter
- Available in a range of colours

See page 80 for size chart



1 DP123 Available in 500/250/125

Polythene Disposable Aprons

- 100% Polythene
- W 69cm (27") x L 107cm (42")
- Antibacterial material



2 DZ310C/A

Black Nitrile Gloves

- Disposable gloves
- Black
- In medium or extra large
- Box of 100 singles



3 DZ300B

Blue Nitrile Gloves

- Disposable gloves
- Blue
- Medium or large
- Box of 100 singles



4 DZ510

Face Visor

- Clear reusable face visor
- Full face protection
- Lightweight
- Adjustable
- Flexible straps
- Easy to clean



5 DZ520

Face Visor with Glasses

- Clear reusable face visor
- Full face protection
- Lightweight
- Plastic glasses structure
- Easy to clean



6 DW79

Cream Vinyl Gloves

- Disposable gloves
- Cream
- In medium or extra large
- Box of 100 singles

See page 80 for size chart

Footwear Guide

SB	Safety footwear with toe cap, resistant to an impact of 200 joules (DK41)
S1	SB + closed heel area, energy absorption, anti-static properties, resistant to fuel oil (DK32, DK38, DK40, DK42, DK95, DK96, DK86, DK83)
S3	SB + S1 + water resistance of upper and penetration resistant protection of sole and cleated outsole (DK23, DK123)
SFC Mighty Grip - Slip Resistant	DK102, DK118, DK82, DK101, DK140, DK135, DK130, DK129
SRC Rated	Slip resistant tested on both ceramic tile wetted with diluted soap and steel tested with Glycerol (DK21, DK23, DK32, DK38, DK40, DK41, DK42, DK82, DK83A, DK83B, DK86, DK114, DK122, DK123, DK135)
SRA Rated	DK95, DK96
01	Anti-static, slip resistance, fuel oil resistant outsole and other materials, tested according to EN ISO 20347:2012 ; DK122



36 - 48

Unisex



37 - 48

Unisex

1 DK32

Leather Safety Shoes

- Full sizes 36-48 (3-13). Standard fitting
- Leather upper
- S1
- SRC rated
- Steel toe cap
- Antistatic function
- Breathable lining



2 DK23

Lace-up Safety Shoe

- Full sizes 37-48 (4-13)
- Water repellent leather uppers
- Steel toe cap
- S3, SRC rated
- Penetration resistant steel midsole
- Full length breathable footbed



37 - 48

Unisex



35 - 48

Unisex

3 DK38

Safety Chukka Boot

- Sizes 37-48 (3-13)
- Slip resistant
- S1
- Steel toe cap
- Full length footbed
- Leather upper
- Anti static feature
- SRC rated
- Ankle support



4 DK40

Slip-On Shoes with Safety Toecap

- Sizes 35-48 (2-13)
- Steel toe cap
- Microfibre
- S1
- Antibacterial linings
- SRC rated
- Anti-static feature
- Full length breathable footbed



Black 35 - 47

White 36 - 47

Unisex



5 DK41

Slip-On Shoe with a Perforated Upper

- Black 35-47 (2-12), White 36-47 (3-12)
- Antibacterial linings
- Specification SB A E FO SRC rated
- Microfibre
- Replacement strap available
- Steel toe cap
- Anti static function
- Perforated full length footbeds



1 DK83A

Executive Non Slip Steel Toe Cap Safety Shoe

- Sizes 39-47 (6-12)
- Leather upper
- Steel toe cap
- S1 SRC rated
- Anti static function
- Full length perforated footbeds



2 DK83B

Executive Non-Slip Shoes

- Sizes 39-47 (6-12) (Standard fitting- slim fitting toe shape)
- Leather upper
- SRC rated
- Anti static functions



3 DK37

Replacement Insole

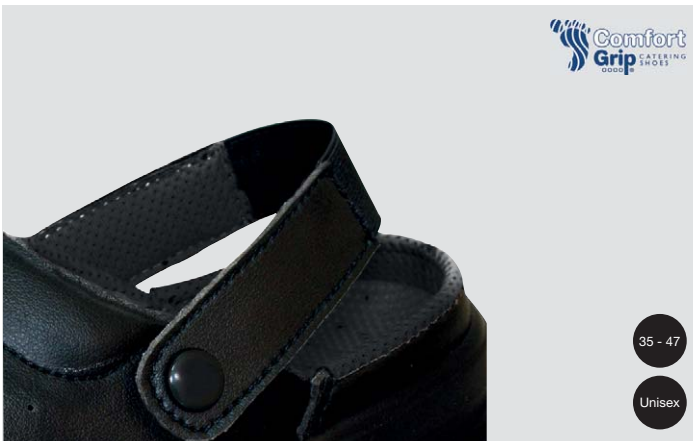
- Sizes 36-47 (3-12)
- Wash at 30°C



4 DK108

Replacement Insole for Safety Shoe

- Sizes 36-48 (3-13)
- Wash at 30°C



5 DK41A

Replacement Strap for DK41

- Sizes 35-47 (2-12)
- Elasticated back section
- Stud fastener



6 DK42

Lace-Up Shoe with Safety Toecap

- Sizes 36-48 (3-13)
- Antibacterial linings
- Steel toe cap
- S1 SRC rated
- Microfibre
- Anti static function
- Full length perforated footbeds





36 - 48

Unisex

1 DK123

Slip on Shoe Composite Toe Black

- Sizes 36-48 (3-13)
- Microfibre
- Slip resistant
- Full length breathable footbed
- Steel toe cap
- S3 SRC rated
- Anti static features



NEW

37 - 46

2 DK140

Casual Retro Lace Up Trainer

- Sizes 37-46 (4-11)
- Microfibre
- High Slip Resistance
- Anti Static function
- Full length breathable footbed



36 - 47

Unisex

3 DK86

Leather Safety Trainer

- Sizes 36-47 (3-12)
- Leather upper
- S1 SRC rated
- Steel toe cap



36 - 48

Unisex

4 DK122

Non Slip Trainer Black

- Sizes 36-48 (3-13)
- Anti-static features
- Slip resistant
- Full length breathable footbed
- 01 SRC rated
- Microfibre



34 - 42

Ladies

5 DK95

Ladies Lace-Up Safety Shoe

- Sizes 34-42 (1-8) slimmer fit
- Microfibre
- Slip resistant
- Steel toe cap
- S1 SRA rated
- Anti static features
- Full length breathable footbed



34 - 42

Ladies

6 DK96

Ladies Slip-On Shoe

- Sizes 34-42 (1-8)
- Slip resistant
- Steel toe cap
- SRA slip rated resistance
- S1 SRA rated
- Microfibre
- Anti static features
- Full length breathable footbed



See page 80 for size chart



NEW

1 DK135

EVA Lightweight Clog

- Sizes 36-45 Dual sizing
- Lightweight
- Shock absorbing sole
- SRC Rated
- Antistatic properties
- Hinged heel strap



5 - 12

Mens



3 - 13

Unisex

2 DK102M

Old School Rider IV Men's

- Sizes 38-47 (5-12)
- Leather upper
- Slip resistant
- Water resistant



3 DK107

Radium Clog

- Sizes 36-48 (3-13)
- Eva, high grade, rubber blend
- Slip resistant
- Water resistant



37 - 48

Unisex



36 - 41

Ladies

4 DK101

Zinc Clog

- Sizes 37-48 (4-13)
- Eva, high grade, rubber blend
- SFC slip resistant
- Water resistant



5 DK102F

Old School Rider IV Ladies

- Sizes 36-41 (3-7)
- Leather upper
- Slip resistant
- Water resistant



See page 80 for size chart

BIRKENSTOCK

1 DK100

Boston Clog

- Sizes 36-48 (3-13)
- Leather upper
- Slip resistant



36 - 48



Unisex



36 - 47 Unisex



2 DK21

Premium Unisex Chef Sandal

- Sizes 36-47 (3-12)
- Leather upper
- Slip resistant



2.5 - 8 Ladies



3 DK130

Reese Ladies Shoe

- Sizes 35-42 (2.5-8)
- Leather upper
- SFC slip resistant
- Water resistant



2.5 - 8 Ladies



4 DK129

Willa Ladies Shoe

- Sizes 35-42 (2.5-8)
- Leather
- Slip resistant
- Water resistant



39 - 47 Mens



5 DK118

Senator Men's Oxford Shoe

- Sizes 6-12 (39-47)
- Leather upper
- SFC slip resistant
- Water resistant



36 - 47 Unisex



6 DK82

Black Sandal

- Sizes 36-47 (3-12)
- Leather upper
- Slip resistant



5 - 12 Mens



7 DK67

Leather Oxford Shoe

- Sizes 38-47 (5-12) available in half size increments
- Leather upper



BIRKENSTOCK

35 - 48 Unisex

8 DK115

Footbed for Super Birki Sandal

- Sizes 35-48 (2-13)



BIRKENSTOCK

35 - 48 Unisex

9 DK114

- Sizes 35-48 (2-13)
- Upper Alpro Foam



利口 RIKOU
VG-10 Damascus
Japanese Steel



1 DM106A
Rikou Smooth Nakiri Knife.
33 layers of Japanese Damascus steel. Blade length: 5.5"
Must not be washed in dishwasher. Sharpen preferably using a fine whetstone, alternatively a fine steel or carbon rod.

利口 RIKOU
VG-10 Damascus
Japanese Steel



2 DM106B
Rikou Smooth Cooks Knife.
33 layers of Japanese Damascus steel. Blade length: 8"
Must not be washed in dishwasher. Sharpen preferably using a fine whetstone, alternatively a fine steel or carbon rod.

利口 RIKOU
VG-10 Damascus
Japanese Steel



3 DM106C
Rikou Smooth Slicing Knife.
33 layers of Japanese Damascus steel. Blade length: 9"
Must not be washed in dishwasher. Sharpen preferably using a fine whetstone, alternatively a fine steel or carbon rod.

利口 RIKOU
VG-10 Damascus
Japanese Steel



4 DM106D
Rikou Smooth Set of 3 Knives. This set includes: DM106A-5.5" Nakiri knife, DM106B-8" Cooks knife and DM106C-9" Slicing knife.

利口 RIKOU
VG-10 Damascus
Japanese Steel



5 DM106E
Rikou Pastry Knife. 33 layers of Japanese Damascus steel. Blade length: 9" with 3 direction sawtooth serration. Must not be washed in dishwasher. Sharpen preferably using a fine whetstone, alternatively a fine steel or carbon rod.

利口 RIKOU
VG-10 Damascus
Japanese Steel



6 DM106F
Rikou Smooth Paring Knife. 33 layers of Japanese Damascus steel. Blade length: 4"
Must not be washed in dishwasher. Sharpen preferably using a fine whetstone, alternatively a fine steel or carbon rod.

利口 RIKOU
VG-10 Damascus
Japanese Steel



7 DM106G
Rikou Carving Fork. Forged stainless steel with flip up carving guard. Must not be washed in dishwasher.



1 DM99A
Soho Knives Set of 3 Knives. This set includes: the DM99B Turning knife, DM99F Paring knife and DM99E Tomato knife.



2 DM99B
Soho Knives Turning Knife. Blade length: 7.5cm (3") Lightweight and ideally suited to cleaning, shaping and peeling fruit and vegetables.



3 DM99C
Soho Knives Paring Knife. Blade length: 7.5cm (3") Lightweight and suited to fine chopping and mincing.



4 DM99D
Soho Knives Paring Knife. Blade length: 10cm (4") Lightweight and suited to fine chopping and mincing.



5 DM99E
Soho Knives Vegetable Serrated Knife. Blade length: 10cm (4") Lightweight and perfect for slicing vegetables.



6 DM99F
Soho Knives Paring Knife. Blade length: 9cm (3.5") Lightweight and suited to fine chopping and mincing.



7 DM99G
Soho Knives Peeler. Blade length: 7.5cm (3") Very sturdy, the double-sided fixed peeler is suitable for both left and right hand use.



8 DM99H
Soho Knives Boning Knife. Blade length: 13cm (5") Designed with a tapered, pointed blade for working around joints.

9 DM99J
Soho Knives Filleting Knife. Blade length: 15cm (6") Lightweight with flexible blade, allowing it to follow the backbone of a fish to effortlessly remove the fillet.



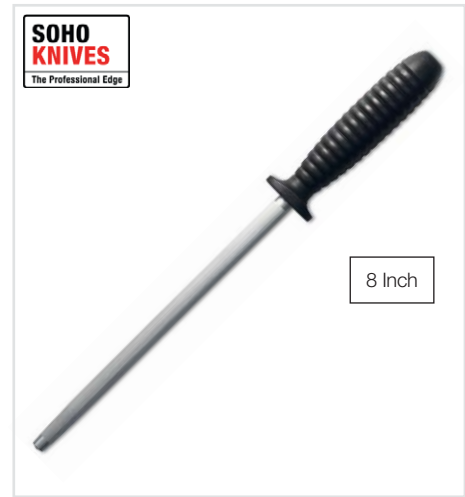
1 DM99K

Soho Knives Deep Cooks Knife. Blade length: 20cm (8") Lightweight and designed to do almost every job in the kitchen from meat, fish to vegetables.



2 DM99L

Soho Knives Palette Knife. Blade length: 20cm (8") The flat, flexible blade is ideal for mixing and spreading.



3 DM99M

Soho Knives Sharpening Steel. Length: 20cm (8") This prolongs the overall life time of a knife. This honing steel is a fine grit.



4 DM99P

Soho Knives 8 Piece Knife Set. This set includes: DM99F Paring knife, DM99G Fixed peeler, DM99H Boning knife, DM99J Filleting knife, DM99K Cooks knife, DM99L Palette knife, DM99M Honing steel and a knife bag.



5 DM99S

Soho Knives 10 Piece Chefs Set. This set includes: DM99B Turning knife 7.5cm (3"), DM99E Tomato knife 10cm (4"), DM99F Paring knife 9cm (3.5"), DM99H Boning knife 15cm (6"), DM99J Filleting knife 12.5cm (5"), DM99K Cooks knife 20cm (8"), DM99W Attache case, DM99Q Pastry knife 23cm (9"), DM99R Santoku 19cm (7.5"), DM99M Honing steel 20cm (8")



6 DM99R

Soho Knives Santoku Knife. Blade length: 19cm (7.5") Lightweight, Japanese style Cooks knife with a straight edge which allows for very fine slicing.



7 DM99Q

Soho Knives Pastry Knife. Blade length: 23cm (9") With a wide, rounded tip which doubles as a palette making it ideal for pastry work.



Maximum temperature advised for regular wash.



Suitable for laundries.



The garment should be delicately washed whether by hand or hand wash cycle.



The StayCool® System is used in all of our Le Chef jackets, which aids with ventilation and moisture transfer away from the body.



Do not bleach.



All AFD garments have a multi-functional and ecological technology which makes the smart fibres able to breathe, and regulate temperature to prevent overheating.



Bleach resistant. The garment colour will resist accidental bleach damage.



Crease resistant. The garment has been treated to help make it easy care and resistant to creases.



Only suitable for dry cleaning.



Garment is waterproof.



Similar to Egyptian cotton, PIMA cotton is an extra-long staple (ELS) cotton species, cultivated in Peru. It is considered to be one of the most superior blends of cotton that is highly durable and absorbent.



Recycled polyester. The garment has been made using 100% recycled polyester.



Eco dyed. This applies to our Originals range, made of cotton. The approximate 30% cutting wastage can be easily recycled without further processing as it hasn't been dyed.



A modern cut with less fullness.



Hand crafted from our historical catalogues of classic styles with the addition of modern techniques and stylish cuts.



Hi tech fabric incorporating state of the art stretch lycra.



Our best value garments.



Imitation buttons easily removed for laundering. Can be used with button strip elastic (DR36).



Snap fastener with a matt plastic cap.

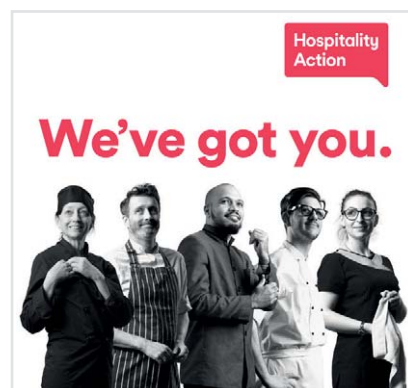


Snap fastener with flat metal rim.



Garment should not be worn around high heat or flame areas

We are proud sponsors and supporters of Clink Charity, Clink Events, Hospitality Action



And many other charities

EMBROIDERY AND ALTERATIONS - WHAT DO WE DO?

We have the ability to alter and embroider a variety of garments in house. Whether you would like your jacket monogrammed with your name or your company logo added to your skull cap - our team have the ability to cater for this.

Step 1: Pick your garment

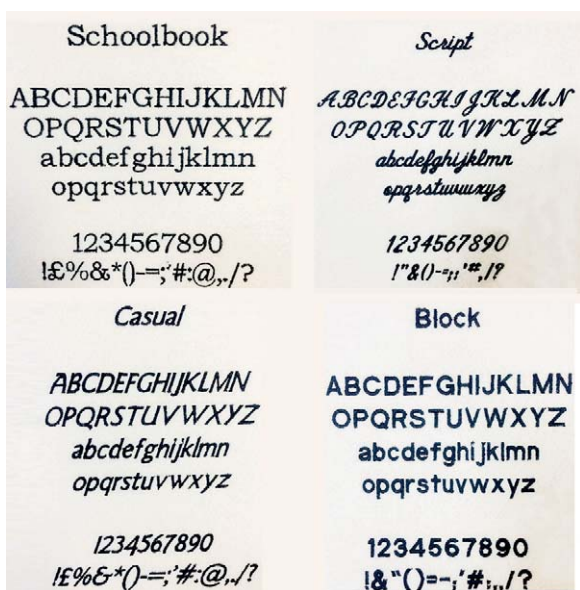
Most of our garments can be embroidered - all chef jackets, aprons, shirts and polos. We can also embroider many of our hats and some of our other garments - if you're not sure just give us a call!

Step 2: Pick your font

Text can be up to 30 letters on two lines. Additional lettering is available if space allows.

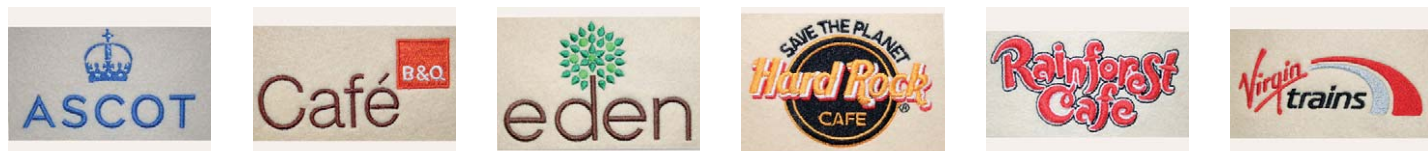
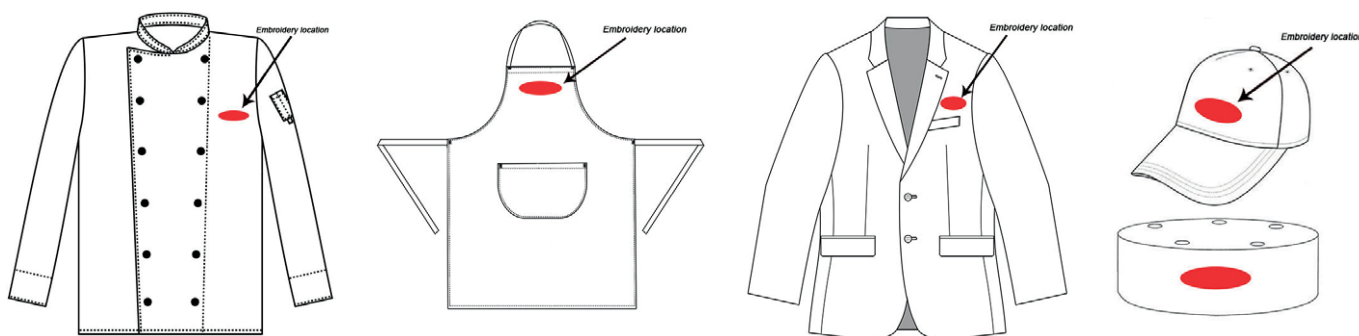
Step 3: Pick your colour

We have hundreds of colours of thread on hand. Below are our standard colours but if you have a specific requirement, perhaps to match a company logo, we can colour match. If you'd like to find out which thread colours we have on hand, please give our sales team a call today.



Step 4: Pick your location

The diagrams below show the standard locations for embroidery. If you would like something different just ask us.



Embroidery Terms & Conditions

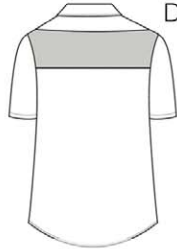
Embroidery is available to any design on most garments. We also offer an alteration service if needed. Please ask our sales team for more information when placing your order. Please note, once a garment is embroidered or altered, garments cannot be returned unless faulty. For larger orders we will require an embroidered sample to be approved before production of the complete order.



Here you will find diagrams of our products and where our high performance breathable panels can be found in our garments. Please see the index (page 82) to find the product.



DF116D



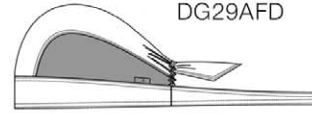
DF116



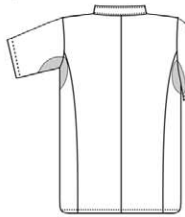
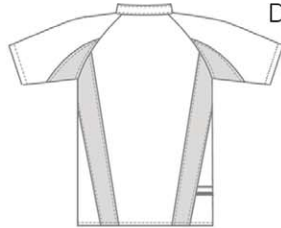
DF37



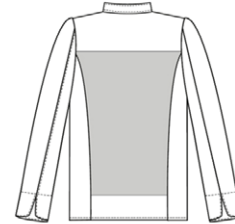
DF14,15



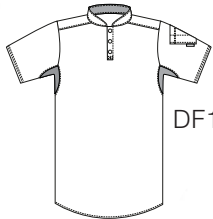
DG29AFD

DF115S
DE47S
DD33S
DD43AFD

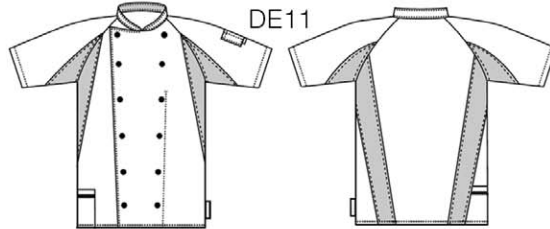
DE128



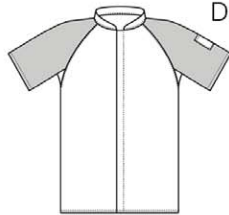
DD08AFDE-L



DF130



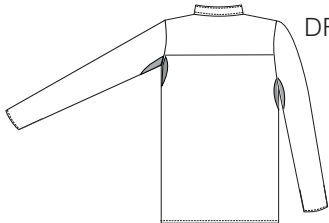
DE11

DD08AFD
DD01AFD
DD04AFD
DD20

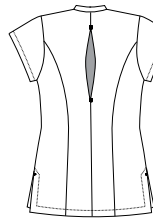
DE112

DF108
DF120
DF118
DF129

DE98



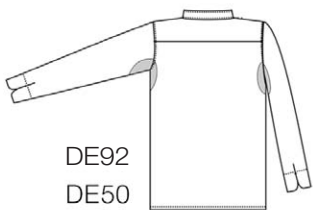
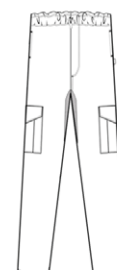
DF112



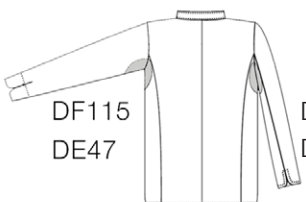
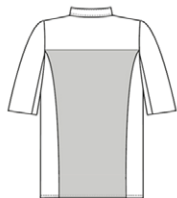
DA85



DF22

DE92
DE50DF91S
DF95S
DE50S
DE20

DE25

DF115
DE47DE49
DD33

DE21

MEASURING

Chest - Measure around the fullest part of the chest or bust, keeping the tape level and held gently.

Waist - Measure around the body level with the top of your waistband.

Trouser Inside Leg - Place tape at fork position and continue down leg to the seam line of your shoe heel. Alternatively measure a pair of your favourite trousers.

Unisex and Men's Garments/Chefswear/Casual

Order size (Women's equivalent)	XXS 6	XS 8-10	Slim S 10-12	S 12-14	Slim M 14-16	M 16-18	Slim L 18-20	L 20-22	XL 24-26	2XL (1X) 28-30	3XL (2X)	4XL (3X)	5XL (4X)
Chest Ins	28-30	32-34	34-36	36-38	38-40	40-42	42-44	44-46	48-50	52-54	56-58	60-62	64-66
cms	71-76	81-86	86-91	91-96	96-101	101-106	106-111	111-116	121-126	131-136	141-146	151-156	161-166
Waist Ins	20-22	24-26	26-28	28-30	30-32	32-34	34-36	36-38	40-42	44-46	48-50	52-54	56-58
cms	51-56	61-66	66-71	71-76	76-81	81-86	86-91	91-96	101-106	111-116	121-126	131-136	141-146

Ladies Tailored Garments

Order size	XS 6	8	S 10	12	M 14	16	L 18	20	XL 22	24
Bust Ins	30	32	34	36	38	40	42	44	46	48
cms	77	82	87	92	97	102	107	112	117	122
Waist Ins	23.5	25.5	27.5	29.5	31.5	33.5	35.5	37.5	39.5	41.5
cms	60	65	70	75	80	85	90	95	100	105
Hips Ins	32	34	36	38	40	42	44	46	48	50
cms	82	87	92	97	102	107	112	117	122	127

Men's Tailored Garments

Chest Ins	34	36	38	40	42	44	46	48	50	52
cms	86	91	96	102	107	112	117	122	127	132
Waist Ins	28	30	32	34	36	38	40	42	44	46
cms	71	76	81	86	91	96	102	107	112	117

Inside Leg Measurement

Unisex	XS	S	M	L	XL	2XL	3XL	4XL	5XL
Regular length	76	76	81	81	81	81	81	81	81
Long length	83	83	88	88	88	88	88	88	88
Men's	XS	S	M	L	XL	2XL	3XL	4XL	5XL
Regular length	81	81	81	81	81	81	81	81	81
Long length	88	88	88	88	88	88	88	88	88

Shirts

Collar Ins	14 1/2	15	15 1/2	16	16 1/2	17	17 1/2	18	18 1/2	19	19 1/2	20	20 1/2	21
cms	37	38	39	41	42	43	44	46	47	48	50	51	52	53

Shoe Size Conversion

Euro	34	35	36	37	38	39	40	41	42	43	44	45	46	47	48
UK	1	2	3	4	5	6	6.5	7	8	9	10	10.5	11	12	

Unisex Headwear (Skull Caps)

	S	M	L	XL
Circumference (inches)	22	23	24	25
Circumference (cm)	56	58	61.5	63.5

GARMENT CARE

It is essential to read the care instructions shown on the garment label carefully. These care recommendations have been chosen to give the best results in cleaning, drying and ironing. It is important that they are followed to maintain the good appearance and wear life of the garment.

- Always wash dark and bright colours before wearing to prevent possible colour rubbing onto lighter garments or skin.
- Wash dark or bright colours separately to avoid staining of light colours in the wash.
- If tumble drying is recommended, you should select temperature/cycle duration setting from the wash temperature given on the label, e.g. if washing at 40°C then tumble dry at warm, if washing at 50°C+ then tumble dry on hot. Never overdry, to prevent shrinkage of fabric or garment.
- For the best results do not mix fabrics with different fibre content in the same washload.
- Wash garments frequently to prevent heavy soiling.
- 100% cotton garments benefit from being pressed whilst still slightly damp.
- Reshape knitted garments whilst damp.

Code	Page	Code	Page	Code	Page	Code	Page	Code	Page
AP98	23	DE21S	35	DH901	41	DM99Q	76	DP70	19
DA85	48	DE25	54	DH902	41	DM99R	76	DP71	22
DA05S	64	DE29	11	DH904L	41	DM99S	76	DP72	7
DA22	64	DE47	35	DH904S	41	DP01	23	DP73	22
DA23	64	DE47S	35	DH905L	41	DP03	5	DP802	19
DA75	48	DE49D	32	DH905S	41	DP10	6	DP82	21
DA76	48	DE50	33	DH907L	42	DP100	18	DP85	8
DB34	47	DE50S	33	DH908L	42	DP101	9	DP85AQ	8
DB35	47	DE92	37	DK100	73	DP102	9	DP94	49
DB36	47	DE92E/F	36	DK101	72	DP103	16	DP97	49
DC15	52	DE92FS	36	DK102F	72	DP108	13	DR02	40
DC18	52	DE92G	37	DK102M	72	DP109	9	DR18MET	40
DC20	52	DE92GS	36	DK107	72	DP10NQ	6	DR36	40
DC25AFD	57	DE92S	37	DK108	70	DP110	18	DS07	46
DC28	53	DE98	54	DK114	73	DP111	6	DS13	46
DC60C	52	DF02	59	DK115	73	DP112	6	DS25	46
DC62	53	DF108	26	DK118	73	DP113	20	DS27	46
DC65	53	DF112	38	DK122	71	DP114	12	DS50	44
DC68	53	DF112S	38	DK123	71	DP115	24	DT25	61
DC90AFD	57	DF115	33	DK129	73	DP117	6	DW01	66
DD01AFD	40	DF115S	33	DK130	73	DP118	12	DW02	66
DD02	30	DF116	28	DK135	72	DP118B	12	DW05	65
DD02S	30	DF118	26	DK140	71	DP118P	12	DW08	66
DD04AFD	40	DF120F	27	DK21	73	DP119	6	DW10	66
DD08	29	DF120M	27	DK23	69	DP121C	20	DW100	14
DD08AFD	39	DF129	38	DK32	69	DP122	12	DW11	65
DD08AFDE-L	39	DF130	26	DK37	70	DP122B	12	DW15	15
DD08S	29	DF14	58	DK38	69	DP122P	12	DW22	15
DD11	29	DF15	58	DK40	69	DP123	68	DW29	63
DD11S	29	DF22	54	DK41	69	DP125	10	DW31	65
DD15	45	DF22A	54	DK41A	70	DP13	8	DW33	65
DD20	30	DF37	58	DK42	70	DP130	7	DW34	63
DD20AFD	39	DF37C	58	DK67	73	DP131	5	DW35A	63
DD20S	30	DF54	56	DK82	73	DP132	19	DW36	63
DD23F	43	DF76	10	DK83A	70	DP133	5	DW41-DNM	15
DD23F/DNM	43	DF86E	13	DK83B	70	DP16	13	DW45-DNM	14
DD23M	43	DF91S	34	DK86	71	DP18	5	DW74	66
DD23M/DNM	43	DF95S	38	DK95	71	DP19	13	DW79	63
DD33	32	DF98E	13	DK96	71	DP19D	13	DW79	68
DD33S	32	DG01	63	DL01	62	DP200	3	DW96	65
DD43AFD	40	DG01	65	DL02	62	DP210	3	DW96-DBL	65
DD56	31	DG02E	60	DL08	61	DP213	17	DW98	66
DD56S	31	DG05	60	DL10	61	DP230A	9	DX17/18	45
DD70	31	DG07	58	DL11	61	DP230AQ	9	DX17B/18B	46
DD70S	31	DG120C	59	DL46	62	DP30	23	DZ300B	68
DD72F	45	DG132	59	DM106A	74	DP31CN	16	DZ310C/A	68
DD72M	45	DG15	59	DM106B	74	DP37	15	DZ400/50	67
DD75	44	DG23	58	DM106C	74	DP37DNM	17	DZ450	67
DD80	44	DG29	59	DM106D	74	DP401	16	DZ460	67
DE109	10	DG29AFD	59	DM106E	74	DP403	17	DZ470E	67
DE109BS	11	DG39	60	DM106F	74	DP44	7	DZ470Q	67
DE109C	10	DG400	60	DM106G	74	DP49	21	DZ490	67
DE11	34	DG401	60	DM99A	75	DP49CN	20	DZ510	68
DE110BS	12	DG402	60	DM99B	75	DP50	9	DZ520	68
DE110DNM	11	DG70	59	DM99C	75	DP52	21	DZ920	64
DE111	11	DG90DNM	58	DM99D	75	DP52CN	20	PKT	3
DE111BS	12	DG91	58	DM99E	75	DP53	5	PR765	61
DE111-DNM	11	DG99	60	DM99F	75	DP55	7	PR785	62
DE112	28	DH02	51	DM99G	75	DP55CNQ	7	PR793	61
DE113	10	DH17	50	DM99H	75	DP59	14	RC24	60
DE113T	10	DH200L	42	DM99J	75	DP601	19	RC47	60
DE115	24	DH205L	42	DM99K	76	DP603	19	UC106	50
DE115T	24	DH300L	42	DM99L	76	DP61	20	UC113	50
DE128	28	DH305L	42	DM99M	76	DP63	20	UC301	50
DE20	34	DH36	51	DM99P	76	DP66	23	WP-TIES	62

Some of our latest, stylish and comfortable workwear:

Dennys Adjustable Beanie Hat with Cuff DG120C (page 59)

Leather Safety Shoes DK32 (page 69)

PPE (Face Masks and More) DZ450 (page 67)

Scrub Suit Set in Ciel Blue DZ920 (page 64)

Helena Therapy Tunic with Zipped Asymmetric Design DA75 (page 48)

Black Leather Apron DP122 (page 12)



Dennys
LONDON®

leChef™
PROFESSIONAL

**JOSEPH
ALAN**
LONDON

AFD®

**Comfort
Grip** CATERING
SHOES

**SOHO
KNIVES**
The Professional Edge